


NEW WAVES

FOR SALE





Step aboard NEW WAVES, a 42.6m Benetti Fast 140 that blends Italian design excellence with relaxed luxury. Delivered in 2015 and kept in pristine condition by a loving private owner, NEW WAVES offers an ideal platform for families, couples, or groups seeking a seamless experience on the sea.

From the expansive sundeck complete with dining, lounging, and bar areas to a stylish beach club with a large swim platform, NEW WAVES is made for outdoor living. Guests can soak in the Jacuzzi on the foredeck or enjoy panoramic views across multiple open-air lounges.

The interior is thoughtfully designed with bright, sunlit spaces and natural tones that mirror the serenity of the Mediterranean lifestyle, enhanced with chic touches by Wolterinck in 2017. Accommodating 10 guests in 5 cabins, including a full-beam master suite, she ensures comfort and privacy.

With a fast displacement hull and at-anchor stabilisers, NEW WAVES cruises effortlessly and comfortably at both economical and higher speeds, perfect for covering more of your dream destinations in style

M/Y NEW WAVES

KEY FEATURES

1. Expansive Sundeck with Bar, Lounging & Dining Areas
2. Stylish Beach Club with Large Swim Platform for Water Access
3. Foredeck Jacuzzi with Stunning Panoramic Views
4. Bright & Elegant Mediterranean-Style Interior
5. Versatile Cabin Layout for 10 Guests - Ideal for Families or Friends
6. Smooth Cruising with At-Ancor Stabilizers & Fast Displacement Hull



ASKING PRICE

€10,800,000 VAT Paid

M/Y NEW WAVES

SPECIFICATIONS

Builder:
Benetti

Length:
42.00 m (137')

Year/Refit:
2015 (Refit 2024)

Beam:
8.50 m (27'10")

Number of cabins:
5

Draft:
2.23 m (7'3")

Cabin detail:
1 Master, 2 VIP, 2 Double

Stabilizers:
Electric Fin Stabilizers

Max speed:
21 knots

Cruise speed:
16.5 knots

Guest cruising:
12

Guest sleeping:
10

Flag:
Cayman Islands

Hull:
GRP

Gross Tonnage:
375 GT

Engine:
2 x MTU 3460 HP

Fuel Tank:
33,390 L

Water Tank:
4,000 L

Crew:
8

Generator:
2x Kohler 80kW - 400V
AC / 50Hz



M/Y NEW WAVES

Beach Club

M/Y NEW WAVES

Bow Deck Area



M/Y NEW WAVES

Bow Deck Area



M/Y NEW WAVES

Bow Deck Jacuzzi



M/Y NEW WAVES

Main Deck Salon



M/Y NEW WAVES

Main Deck Salon



M/Y NEW WAVES

Main Deck Salon & Dining



M/Y NEW WAVES

Master Cabin



M/Y NEW WAVES

Master Cabin



M/Y NEW WAVES

Master Cabin Ensuite



M/Y NEW WAVES

Main Deck Corridor



M/Y NEW WAVES



VIP Cabin

M/Y NEW WAVES

VIP Cabin



M/Y NEW WAVES

Double Cabin



M/Y NEW WAVES

Double Cabin



M/Y NEW WAVES

Guest Cabin Ensuite



M/Y NEW WAVES

Upper Deck Salon



M/Y NEW WAVES

Upper Deck Salon



M/Y NEW WAVES

Upper Deck



M/Y NEW WAVES

Upper Deck



M/Y NEW WAVES

Upper Deck



M/Y NEW WAVES

Sundeck



M/Y NEW WAVES

Sundeck Dining



M/Y NEW WAVES



Sundeck

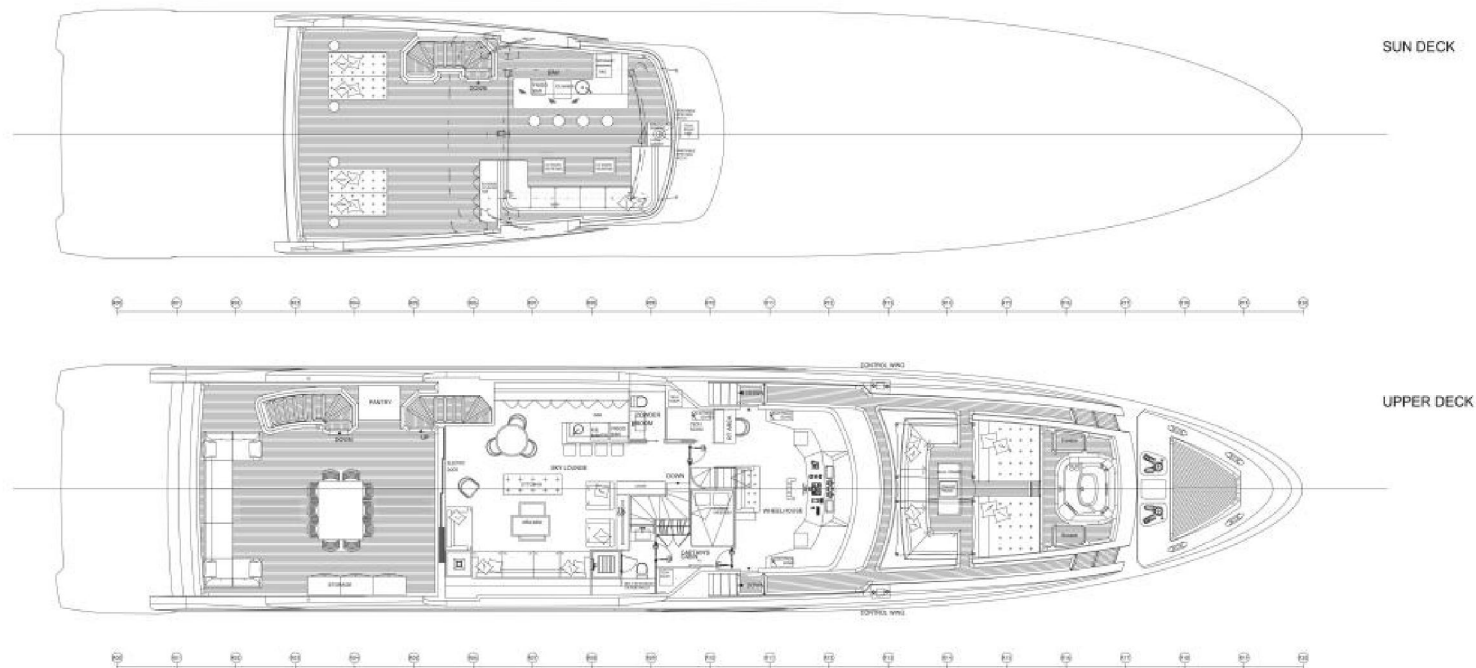
M/Y NEW WAVES

Sundeck

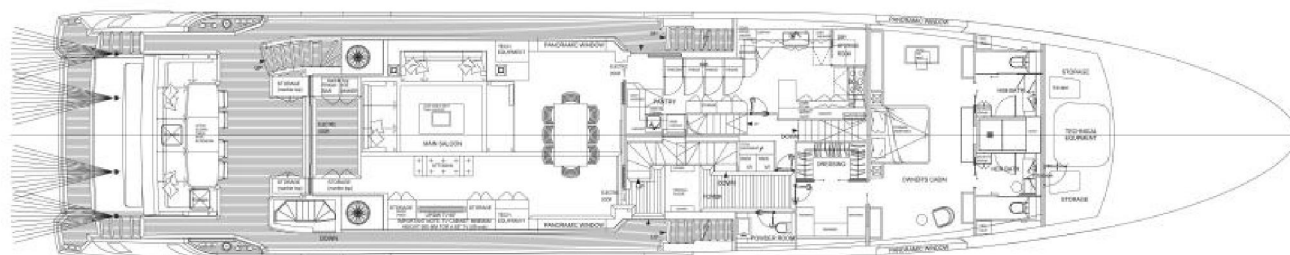


M/Y NEW WAVES

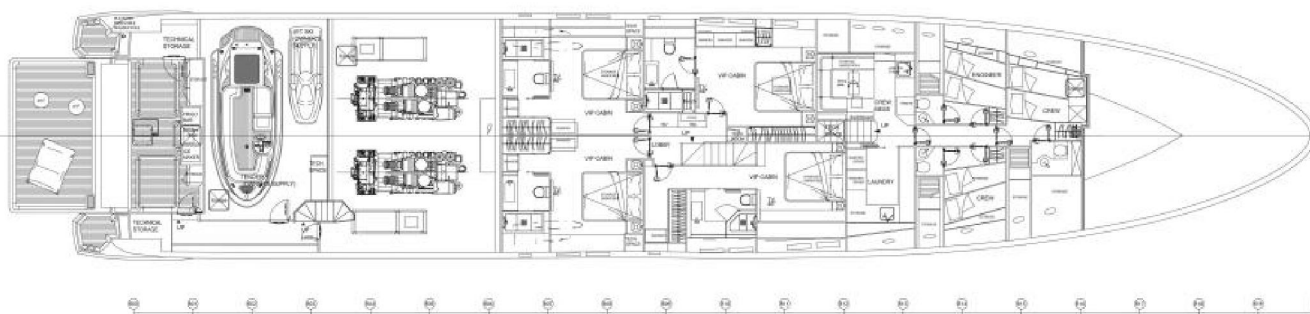
Layout



Layout



MAIN DECK



LOWER DECK

Engines & Propulsion

- Twin MTU 12V 4000 M93L engines, 3460 HP each
- Approx. engine hours (1 December 2025): Port 3588 hrs / Starboard 3582 hrs
- Diesel propulsion via prop shafts
- ZF 7600A reduction gearboxes with 3.45:1 ratio
- Two high-skew 1500mm propellers for high efficiency and low noise
- Bow thruster: CMC BTM60, 55 kW electric motor
- Electrical stabilizer fins (CMC 22BR) for underway and at-anchor stabilisation
- Hydraulic/electric power pack located in aft technical space

Generators & Electrical

- Two Kohler 80kW generators (400V AC / 50Hz), each with approx. 7735 hrs (Dec 2025)
- 400V AC, 50Hz, 3-phase electrical system
- 2 × ASEA AC54V (54kVA) shore power converters
- 2 × 25m, 125A shore power cables
- 2 × 50kVA 400V shore insulating transformers
- Mix of European, US, and USB outlets across the vessel
- All batteries are GEL or AGM depending on application
- Dedicated batteries for: radio equipment (24V), service (24V), main engines start (2× 24V), generator start (2× 24V), main engines electronics (24V)
- Alternators on main engines and generators charge batteries
- Dedicated battery chargers for all battery groups

Air Conditioning & Ventilation

- Condaria chilled-water AC system with 432,000 BTU/h total capacity
- Three independent compressor/condensing units with seawater-cooled condensers
- Systems fitted with frequency converters
- Four primary air-treatment units with filters, dampers, heat exchangers & fans
- 2 × seawater pumps and 2 × freshwater pumps for AC system
- All air handlers include heating elements for cold climates

Pumps, Systems & Auxiliary Machinery

- Tecnicomar ECOmar sewage treatment plant (6,000 L/day)
- UV water filtration + 2 × water softeners
- Fuel transfer pumps (Gianneschi ACB 331/B electric + Excelsior 5 manual)
- Grey/black water pump: Gianneschi MVI60
- Fresh water pumps: 2 × Gianneschi ACB332
- Hot water pumps: 2 × Gianneschi Z30
- Two 200L hot-water heaters
- Air compressor Gianneschi CT2 (garage)
- Idromar MC5S watermaker (6000 L/day)
- Alfa Laval MB3035 for fuel polishing
- Jacuzzi "Delos" fitted on forward area

Galley

- Miele 5-burner cooktop + extraction fan
- Miele cooktop warmer
- Miele oven
- Stainless steel double sink
- Miele microwave
- 3 × Miele refrigerators
- Miele freezer + chest freezer in garage
- Full-height Miele wine chiller (178 bottles)
- Laundry
- Miele washing machine
- Miele dryer

Other Areas

- Main saloon: ice maker + mini fridge
- Owner's study: mini fridge
- Upper deck saloon: ice maker + mini fridge
- Beach club: ice maker + mini fridge
- Sundeck bar: ice maker + mini fridge
- Extra freezer (main deck storage)
- Extra wine cellar (beach club)

Communication Equipment

- VHF Sailor Mod RT 6210
- VHF remote control (crew mess, galley)
- 4 × portable VHF Sailor Sp3510 units
- SSB Sailor 6301 HF/MF radio telephone
- 5G Pepwave router
- VSAT KVH V11 with full-vessel Wi-Fi + VOIP server integration
- PABX system with 12 telephone units
- Starlink system installed
- 2024 UHF crew radio system with 10 portable units

Navigation Equipment

- Full integrated navigation + yacht monitoring system
- Three 15" touchscreens for navigation, monitoring, automation, and steering
- Dedicated controls for horn, wipers, charts, radar, searchlight, foghorn, wind/speed/depth data, lighting, bilges, doors/hatches, autopilot, and steering
- Four 19" IP65 monitors (radar, charts, CCTV, navigation)
- Two 10" IP65 wing monitors
- Furuno FR BB 2117 X-band, 12kW radar (96 nm)
- Furuno NavNet 3D ARPA radar/plotter/video system
- DFF1 blackbox echosounder (depth/speed/temperature)
- Furuno GP150 GPS
- NavNet 3D BB MPU-001
- AIS Transas ECS 4000 (ECDIS-compliant chart plotter)
- Wind Multi NMEA system
- Steering room rudder-angle indicator
- Furuno Satellite Gyrocompass SC30
- VHF Sailor RT 6222 Class A GMDSS
- NAVTEX NX700
- Furuno FA150 AIS
- Sailor 406 EPIRB
- 2 × McMurdo S4 SARTs
- BNWAS system with motion sensors

Entertainment Equipment

- Benetti Exclusive Sea Technology (BEST) integrated audiovisual system
- iPads for AV, lighting, AC, and shades (varies by area)

Guest Cabins

- Samsung 46" HD TV
- BEST Client
- Denon X3000 amplifier with AirPlay
- Apple TV
- Satellite decoder
- iPad Mini controller
- Promar marine speakers

Owner's Cabin

- BEST VOD system
- Denon X4000 amplifier
- Apple TV + satellite decoder
- iPad Mini control for AV + lights + AC + shades
- Promar speakers + B&W subwoofer

Main Saloon

- Samsung 65" HD TV with lift
- BEST VOD
- Denon X4000 amplifier
- Apple TV + satellite decoder
- Promar speakers + B&W subwoofer

Wheelhouse / Crew / Outdoor Areas

- TVs and integrated audio across crew mess, captain's cabin, and galley/pantry
- B&W exterior speakers (all new in 2024 across decks)
- Networked audio clients on sun deck, forward deck & upper deck

Deck Equipment

- 2 × 240kg galvanized steel HHP anchors
- 17.5mm stud-link chain, 165m each side
- 2 × Ital electric windlasses (5.5 kW, 400V AC)
- 2024: new anchor swivels + full system inspection
- 2 × Ital electric vertical capstans (4 kW) on aft deck
- Telescopic hydraulic gangway (6.5m), Snow White finish with teak grating
- Remote-control operation + removable handrails
- Swimming Ladders
- 1 × stainless-steel manual ladder with teak steps
- 1 × custom swimming ladder
- Motorized forward sun-deck awning
- Manual awnings for upper aft deck and forward sun deck
- Garage
- Electro-hydraulic telescopic crane for tender and jetski

Safety & Security Equipment

- Full safety equipment per flag & class
- Fire hoses, nozzles, extinguishers, axes
- Electric self-priming fire pump (Gianneschi ACM 531, 300 L/min)
- Fixed fire-extinguishing system in engine room
- Fire alarm system with heat/smoke detectors in all spaces
- Bilge pumps (engine room & garage)
- Motor pump for bilge/fire (Gianneschi MACB 531, 150 L/min)
- 4 × liferafts for 10 persons each (hydrostatic release)
- CCTV system (7 cameras: engine room, walkways, sundeck, garage, aft decks)
- Pneumatic horn integrated into nav system
- 2 × external wing control stations with steering tiller, bow thruster control, horn, engine throttles, engine start/stop, alarms, and emergency shutdowns

Refit History

General Condition

- Maintained by permanent full-time crew
- Preventive maintenance program with annual servicing
- All machinery serviced per manufacturer, flag & class guidelines

2017

- Interior & exterior layout refit (fabrics, lighting, carpets, custom furniture)
- Interior upgrade with designer Wolterinck
- New bridge alarm control system

2020

- RINA 5-year Special Survey
- Bow thruster complete overhaul
- New bridge screen
- New sundeck umbrellas

2021

- Pepwave 5G system installed
- Conning computer reconditioned
- Additional water softener installed

2023

- CMC stabilizer fins replaced (one in 2018, second in 2023) + system overhaul
- Starlink system installed
- New sundeck furniture and table
- Fresh water tanks inspected & repainted
- New battery charger

2024 - Major Refit Year

- Full repaint of hull & superstructure (Awlcraft 3000 Matterhorn White)
- Full service of engines & generators + oil analysis
- Heat exchangers replaced on main engines
- Generator top-end overhaul (MTU 5000-hour service), new particle filters
- Generator injectors replaced (3/6 on each)
- Gearbox oil changed
- Alfa Laval serviced
- ACSEA serviced
- Engine-room ventilation upgraded
- All valves inspected & replaced as needed
- HVAC total refit (new motors, pipes, insulation, chiller overhaul)
- Full electronics service + preventive maintenance
- New UHF radio system (10 units)
- All carpets professionally cleaned
- New custom side wind-shields on upper deck
- New B&B beach-club furniture
- New 5G antenna
- Full teak resanding, repairs & deep clean
- Foredeck teak re-caulking
- New B&W exterior speakers throughout
- All exterior custom furniture repainted
- Gangway overhauled (hydraulic & electric) + new paint
- Garage & beach club fully repainted
- Garage & beach-club doors overhauled (hydraulic & rams)
- New anchor swivels
- Watermakers overhauled (new membranes, pumps, pipes, sand filters)
- Nearly all pumps onboard replaced within 2 years
- New galley extractor
- Tecnicomar sewage-treatment upgrade for new regulations
- Two boilers cleaned & inspected
- Fuel tanks inspected & recoated with epoxy

List is non-exhaustive

MI/Y NEW WAVES

