

# ELZA OF LONDON

FOR SALE



Elza of London is a striking 37.3-metre motor yacht crafted by renowned builder Gulf Craft and delivered in 2015 from their advanced Umm al-Quwain shipyard in the United Arab Emirates. Elza of London brings together contemporary design, robust engineering, and luxurious comfort. Built with a GRP hull and superstructure and finished with teak decks, she offers the advantages of a semi-displacement design, combining stability, smooth seakeeping, and strong performance.

Powered by twin Caterpillar C32 engines, Elza of London reaches top speeds of up to 24 knots, with a comfortable 22-knot cruising capability, ideal for swift island-hopping or extended coastal journeys. She is built to BV classification standards, further affirming her quality and seaworthiness. Privately owned, never chartered, and freshly updated with a 2022 refit, she has been consistently maintained to high standards.

Inside, Elza of London accommodates up to 10 guests across 5 cabins, including a full-beam master cabin, a VIP Cabin and 3 Double Cabins, each offering a generous volume afforded by her 7.54-metre beam. Up to 6 crew are housed onboard to ensure a seamless luxury experience.

**M/Y ELZA OF LONDON**



## KEY FEATURES

1. 2022 refit and privately owned, never chartered, ensuring pristine condition
2. Spacious 5-cabin layout for 10 guests, including a full-beam master suite
3. Excellent stability, smooth seakeeping, and versatile cruising
4. Built to BV classification standards with accommodation for up to 6 crew

## TOYS & EQUIPMENT

Zar 5m Tender Boat

## ASKING PRICE

€6,950,000 VAT not paid

**M/Y ELZA OF LONDON**

## SPECIFICATIONS

Builder/Model:

Majesty 122

Length:

37.30 m (122')

Year Built:

2015 (Refit 2022)

Draft:

1.83 m (6')

Flag:

British

Beam:

7.52 m (25')

Stabilizers:

Fin Stabilizers

Hull construction:

GRP

Max speed:

20 knots

Cruise speed:

14 knots

Guest cruising:

12

Guest sleeping:

10

Number of cabins:

5

Crew:

6

Engine:

2 x Caterpillar C32

Classification:

RINA Commercial

Fuel tank:

7,360 L

Cabin detail:

1 Master, 2 Double, 2  
Twin

Water tank:

1690 L

**M/Y ELZA OF LONDON**



Bow Area



**M/Y ELZA OF LONDON**

Sundeck



**M/Y ELZA OF LONDON**



Sundeck



M/Y ELZA OF LONDON

Sundeck



**M/Y ELZA OF LONDON**



Main Salon



**M/Y ELZA OF LONDON**



Main Salon



**M/Y ELZA OF LONDON**



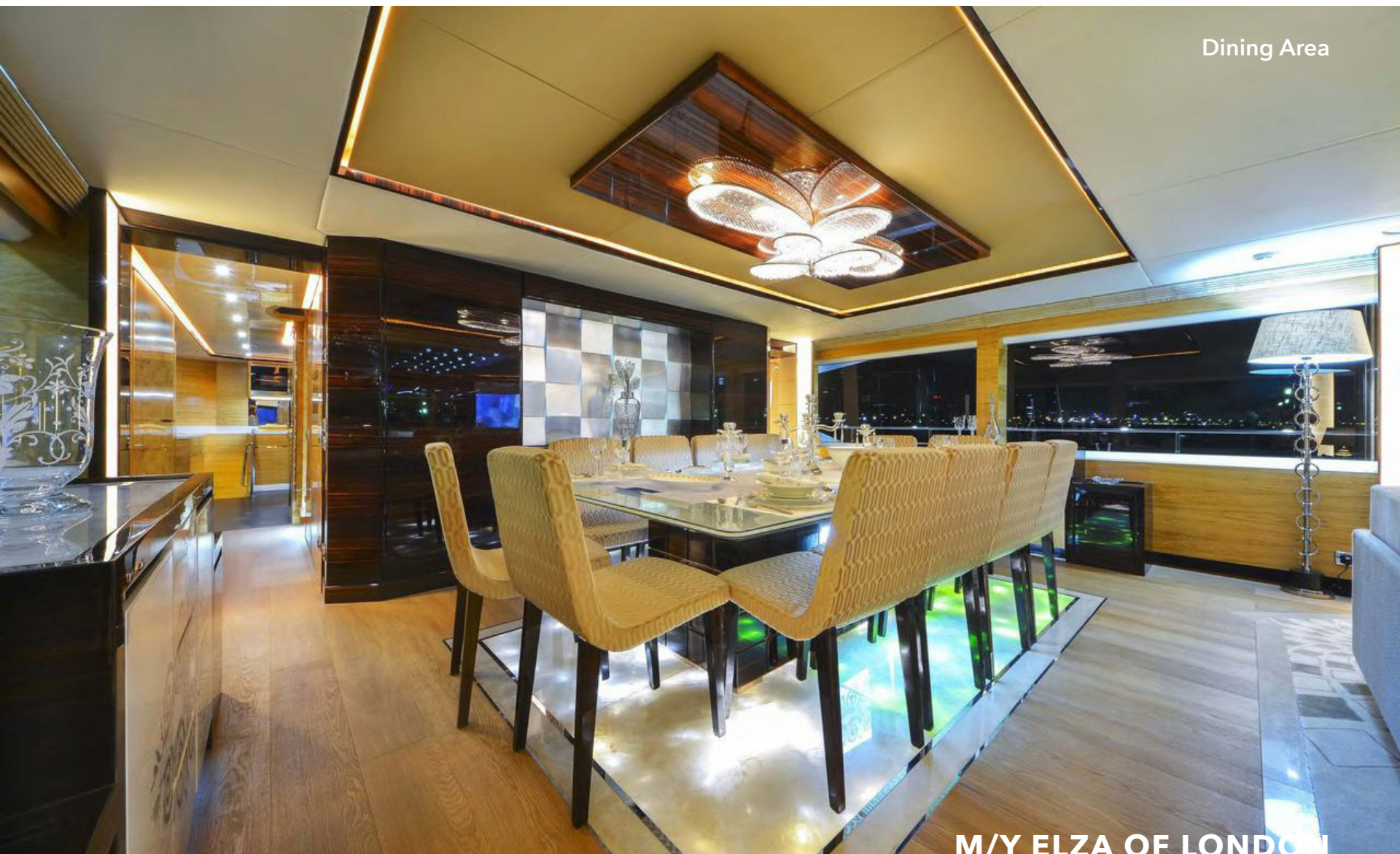
Dining Area



M/Y ELZA OF LONDON



Dining Area



M/Y ELZA OF LONDON



Master Cabin



M/Y ELZA OF LONDON

Master Cabin



M/Y ELZA OF LONDON



Master Cabin



M/Y ELZA OF LONDON

Master Cabin



M/Y ELZA OF LONDON



Master Cabin



M/Y ELZA OF LONDON

Double Cabin



M/Y ELZA OF LONDON





Twin Cabin

M/Y ELZA OF LONDON

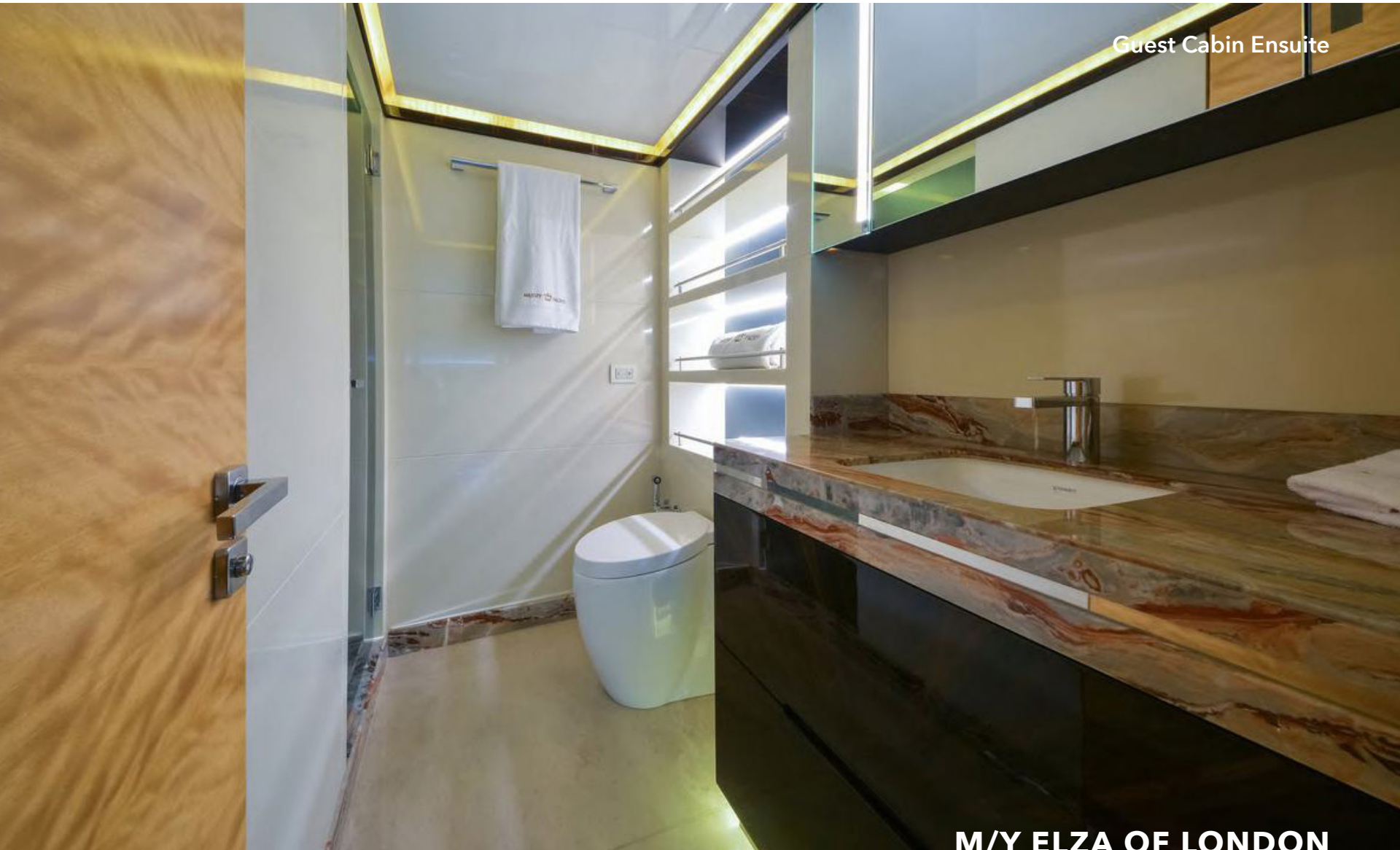
Twin Cabin

M/Y ELZA OF LONDON





Guest Cabin Ensuite



**M/Y ELZA OF LONDON**

Bridge



M/Y ELZA OF LONDON



# M/Y ELZA OF LONDON

