

M/Y OLIVIA
FOR SALE
& CHARTER



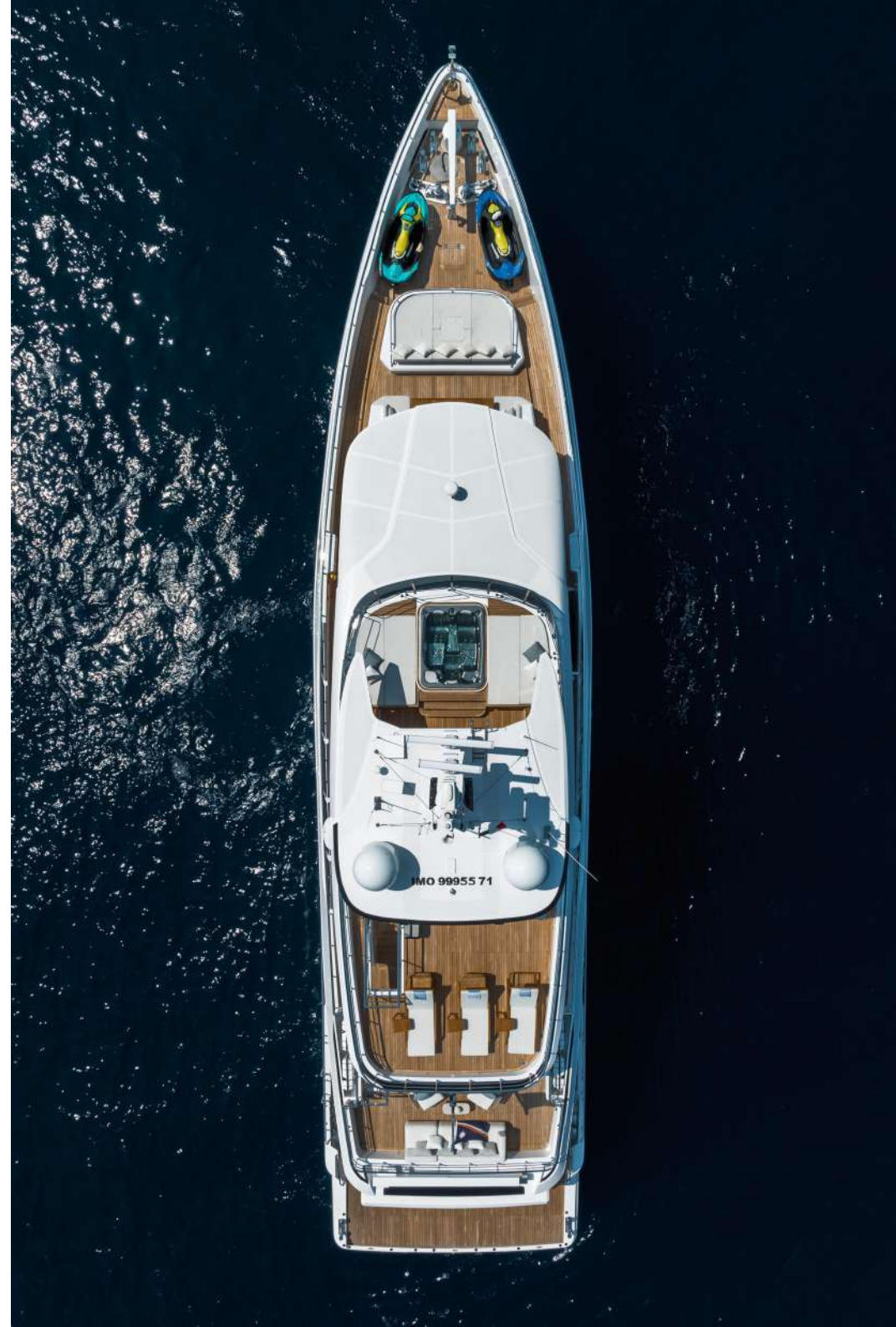
M/Y OLIVIA

The magnificent Majesty 120 is an immaculate superyacht designed for private getaways and effortless entertaining. The powerful 37m Majesty 120 has been built with the owner's preferences in mind, with a strong focus on luxury, performance and comfort.

Aggressive lines and a demanding profile define the Majesty 120, with the signature Majesty Yachts windows lining the hull. Extensive use of glass offers an unparalleled connection to the outdoors with low bulwarks allowing for an ornamental glass railing design.

Amongst the standout features onboard the new Majesty 120 is a Jacuzzi situated on the sun deck. This superyacht boasts 30% larger outdoor entertainment areas compared to any other yacht in its class.

The smart layout onboard the Majesty 120 allows for a beachclub to double as a tender garage, creating a hybrid solution for the guests onboard. The multipurpose ladder that extends from the swim-platform allows for an easier and safer access to the superyacht while moored.



ASKING PRICE

USD 13,900,000 TAX not paid

SPECIFICATIONS

Builder:
Gulf Craft, Majesty Yachts

Year Built:
March 2023

Flag:
Marshall Islands

Displacement:
230 tons

Hull material:
Fiber Reinforced Plastics

Engines:
2 x CAT C32 2400 HP combined with SCR exhaust (400 hours)

Fuel tank capacity:
17,000 L (4,490 US gal)

Grey water capacity:
2,013 L (532 US gal)

Max speed:
20 knots

Guest cruising:
12

Number of cabins:
6

Cabin detail:
1 Master, 3 Double, 2 Twin's convertible with pullman

CHARTER WEEKLY RATE

225,000 EUR + all

Length:
37.55 m (123' 1")

Draft:
2.10 m (6' 9")

Beam:
8.36 m (27' 4")

Gross tonnage:
285 GT

Classification:
RINA Commercial

Generator:
2 x Kohler 80 kW

Fresh water capacity:
9,812 L (2,592 US gal)

Black water capacity:
4,457 L (1,177 US gal)

Cruising speed:
12 knots – Range 1,150 NM

Guest sleeping:
12 + 2

Crew:
8

Stabilizers:
Electric fin stablizers / Humphree

OPTIONS

- Engines - CAT C32B 2400hp with SCR complying with IMO Tier III
- RINA Commercial LY3/MCA
- Electrohydraulic crane at foredeck with 770kg lifting capacity
- Isolation transformer
- Electrohydraulic crane at aft.
- Multifunctional Hydraulic Passarella installation
- Telescopic crane 1100kg with installation
- Jetski stand SS - 2 No's
- Upgrade to commercial professional galley
- Aluminium teak swimming ladder instead of std SS ladder
- Aft Hawser pipe height extension 2Pcs
- Storage in the saloon sofa lounge and sky lounge
- Privacy screen- vertical sun curtain in cockpit
- Twin guest cabin bed convertible to double
- Mooring bits stopper ring & bollard FRP base raised by 1
- Fresh water inlet direct to fill the tank (Port & Stbd)
- Anchor chain area to build storage
- All exterior lockers with grill and drain
- Clips for cover in SS
- Indromar water maker 500 Ltr/Hr instead of std HP 540Ltr/hr
- Water softener and UV Lamp with installation
- Ali outside fabric covers waterproof - instead of std cover
- Safes in VIP cabins -3Pcs
- Exterior teak furniture
- Wing station (P & S) real side helm station plugged on both side
- Floor switch for electric door between galley and guest house
- Additional dish washer for glass on UD
- Additional dish washer in Pantry area
- Extra Refrigerator at Sky lounge -1Pc
- GSM range extension outdoor antenna -1Pc
- Additional bed in Captain's cabin
- Extra 2 No's Navigational 19" LCD display in Helm
- Extra Ice maker at main deck pantry & Flybridge - 1Pc each
- All exterior storage locker door stoppers (Port & Stbd)
- Life ring to be recessed in the structure (Port & Stbd)
- Gunnel area Port side entrance to engine room outlet and switch
- Gunnel area Port side light and socket
- All filters must have ball valves on inlet and outlet pipes
- Additional storage in Pantry area
- Storage for life saving equipment with Flipdown shutters
- Revised service area with sink, mixer & trash bin
- UD Saloon additional Storage space with shutters and drawers
- Wheelhouse electrical panel lockers W/ dark glass
- Wheelhouse Aft Wall Locker W/Shutters Glass or Open Shelves
- Aft Crew Area Layout Modification Including Furniture
- MD Cockpit Table Modification W/Fill in Piece in the Middle
- Owner Cabin Computer Desk instead of Std Port Side Sofa
- Owner's bathroom access door to be sliding type
- Additional Material-Equipment on Wheel House
- Helm seat on either side of the bridge (additional pilot seat 1 Pc)
- Flip down coart table on AFT bulkhead (above sofa brackest) + 2 X Chart lights
- 2 X chart lights + 2 X red courtesy lights
- 2 X chart storage drawers to add to the step below the sofa unit
- Flip up table on either side of the bridge
- Work top on both sides of the bridge to use acrylic sheet on top of leather finish

















DOUBLE CABIN

M/Y OLIVIA



DOUBLE EN-SUITE

M/Y OLIVIA



TWIN CABIN

M/Y OLIVIA





UPPER DECK
SALON

M/Y OLIVIA



UPPER DECK
SALON



M/Y OLIVIA







FLYBRIDGE

M/Y OLIVIA







BOW AREA

M/Y OLIVIA

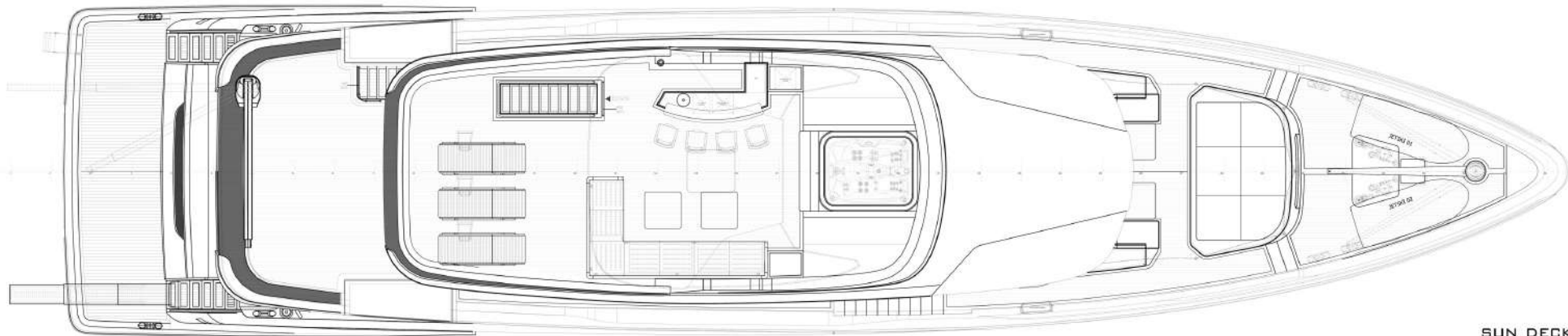


BOW AREA

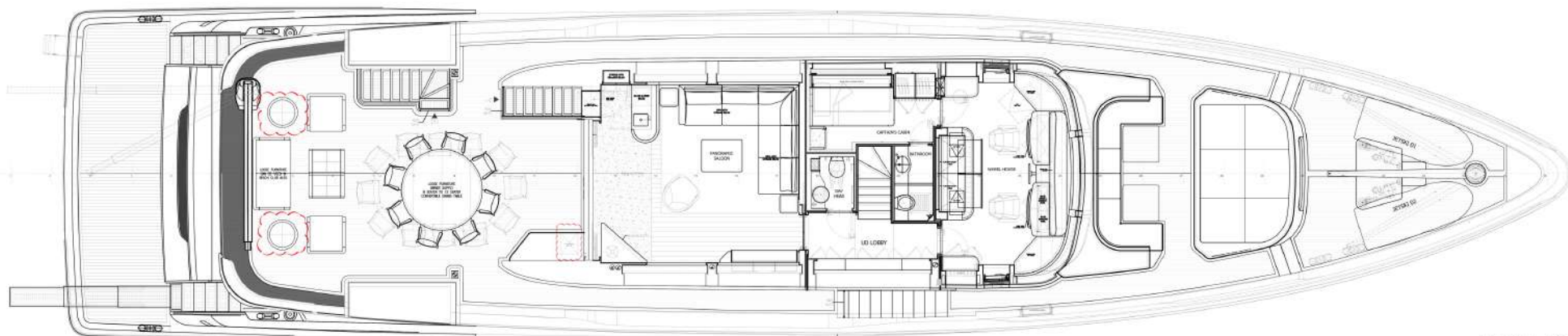
M/Y OLIVIA



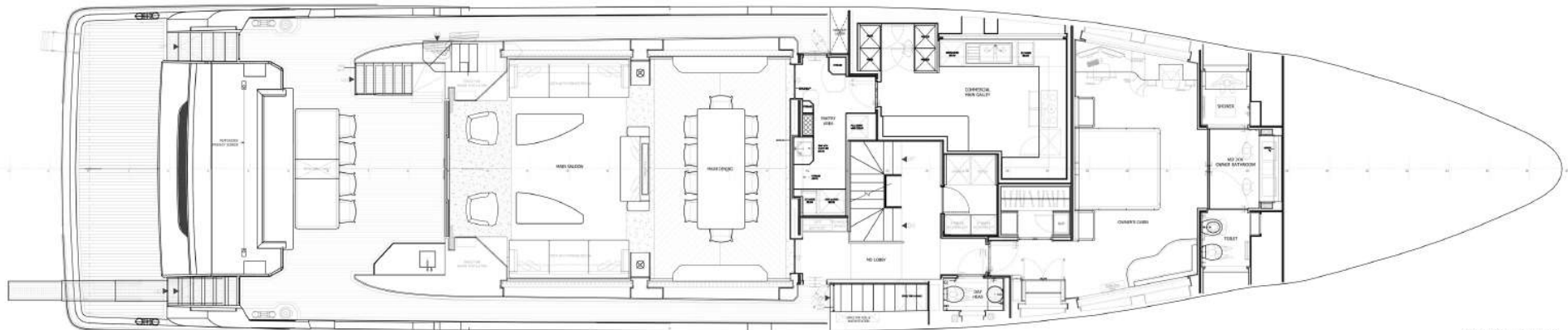




SUN DECK



UPPER DECK



MAIN DECK



LOWER DECK



