

MAIORA

# 30 Walkaround



**NEXT**  
YACHT GROUP



**MAIORA**  
IT'S ALL ABOUT YOU

PART OF  
**NEXT**  
YACHT GROUP



**MAIORA**  
IT'S ALL ABOUT YOU

PART OF  
**NEXT**  
YACHT GROUP



**MAIORA**  
IT'S ALL ABOUT YOU

PART OF  
**NEXT**  
YACHT GROUP





















## MAIN SPECS



### CONSTRUCTION

Hull	COMPOSITE
Superstructure	COMPOSITE

### DIMENSIONS

Length Overall L.O.A.	30.50 M / 100'1"
Beam	7.50 M / 24'7"
Max Draft	1.90 M / 6'3"
Displacement at full load	105 T / 231,485 lbs

### TANKS CAPACITY

Fuel Capacity	13,000 L / 3,434 US gal
Water capacity	3,000 L / 793 US gal

### PROPULSION

Main engines power	2x MAN V12-2000 2000 hp each (1471 kW @ 2300 rpm)
Transmission	v-shaft
Stabilization	zero speed & underway electrical fin stabilizers

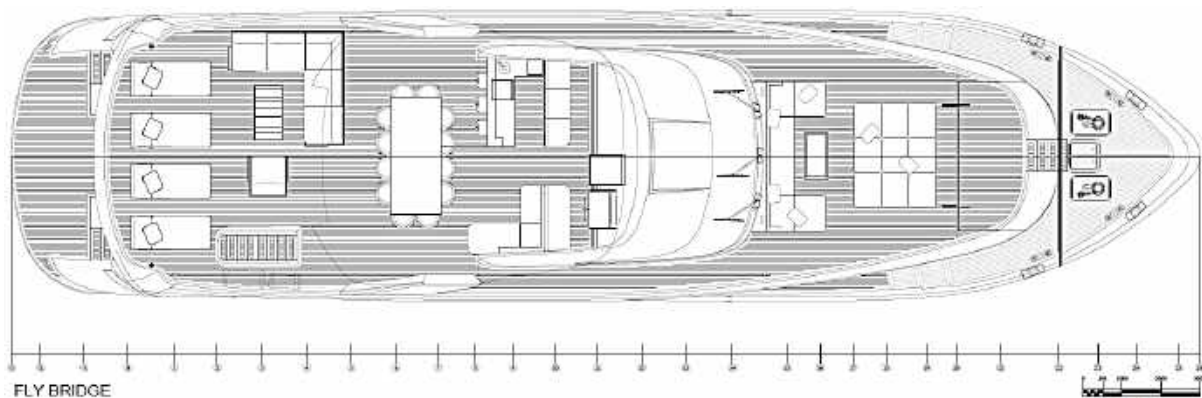
### PERFORMANCE

Max speed	22 knots
Cruising Speed	18 knots
Range	~ 1,100 NM @10 knots

### ACCOMMODATION

Guests	up to 12 in 5 cabins
Crew	5 in 3 cabins

# GENERAL ARRANGEMENTS



FLY BRIDGE

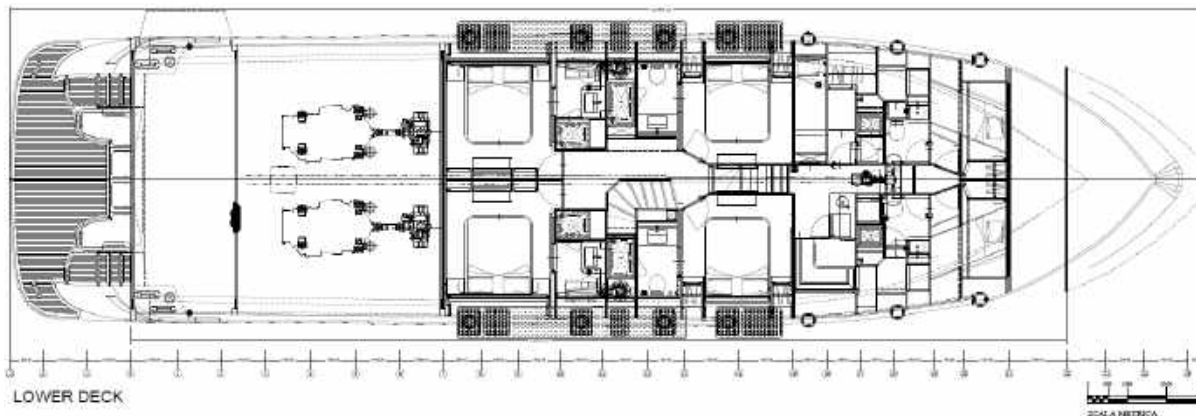
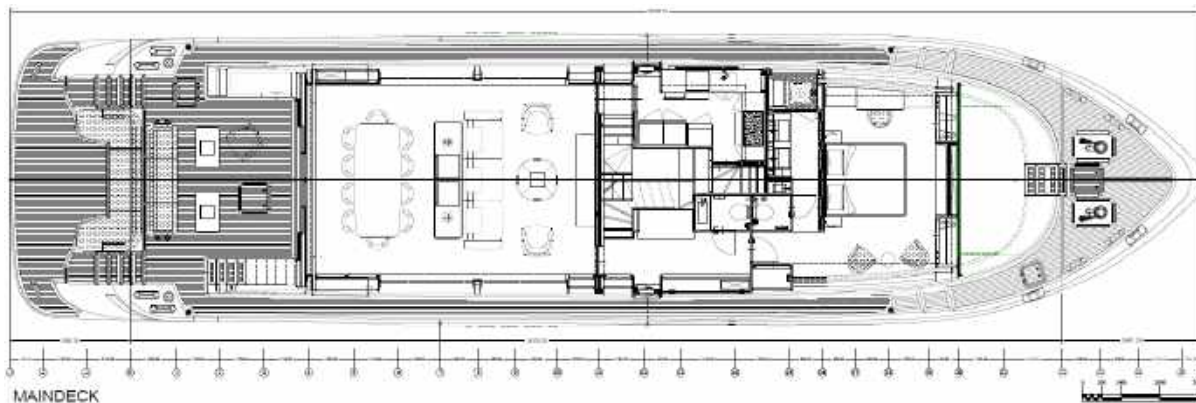
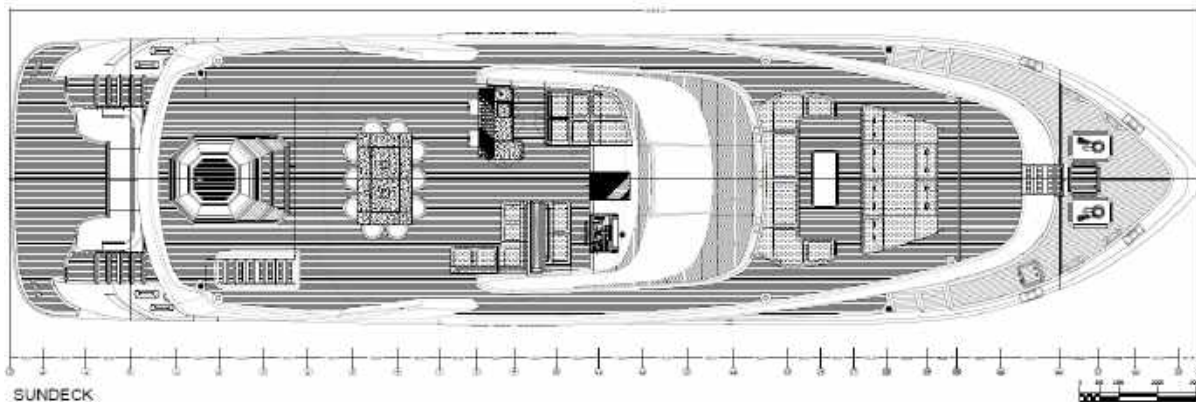
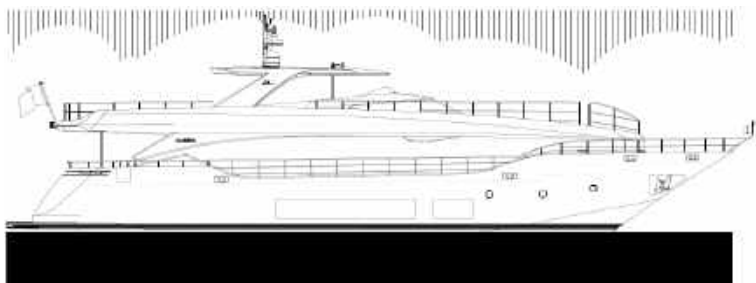


MAIN DECK



LOWER DECK

# GENERAL ARRANGEMENTS







**MAIORA**  
IT'S ALL ABOUT YOU

PART OF  
**NEXT**  
YACHT GROUP













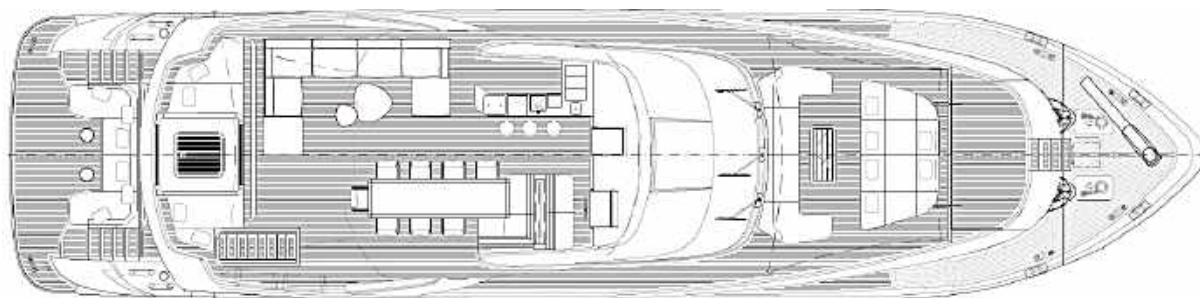
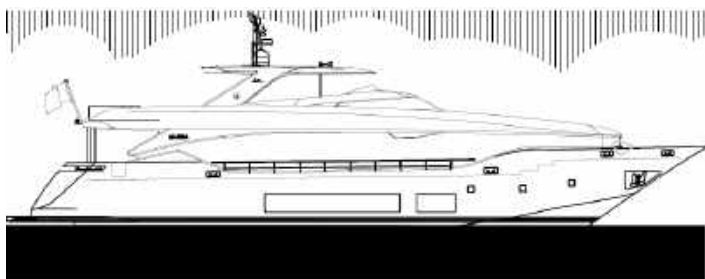




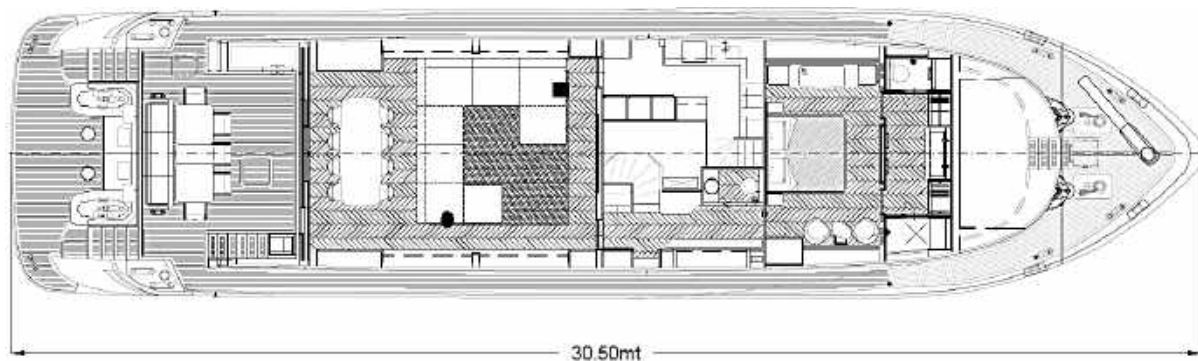




# GENERAL ARRANGEMENTS

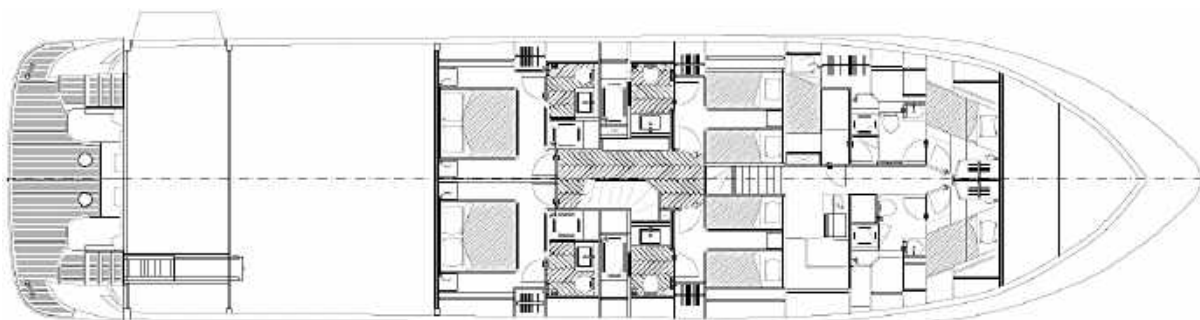


SUN DECK



30.50mt

MAIN DECK



23.95mt

LOWER DECK

SCALA METROCCA



























