



ICON

Length: 67.50 metres (221' 5")

Beam: 11.40 metres (37' 5")

Draft: 3.8 metres (12' 6")

Number of Guests: 12

Number of Crew: 19

Built: 2010

Refit: 2014

Builder: Icon

Naval Architect: Icon Yachts

Flag: Cayman Islands

Hull Construction: Steel

Hull Configuration: Displacement

Air conditioning, Approved RYA water sports centre, Deck
Jacuzzi, Gym/exercise equipment, Stabilisers at anchor,
Stabilisers underway, WiFi connection on board

KEY FEATURES

- 1** 2020 - full exterior re-paint
- 2** 2019 - interior refurbishment, new soft furnishing.
- 3** Fabulous and over spacious “beach-club” with gym, massage room and sauna
- 4** Spectacular pool on aft deck and Jacuzzi on bridge deck.
- 5** Incredible outside deck areas over 4 expansive decks
- 6** Superb guest accommodation for up to 12 in 7 cabins, 4 double, 2 convertible



ICON - Running shot



ICON - Running shot



ICON - Running Shot



ICON - Beach club



ICON - Beach club



ICON - Main deck aft



ICON - Main Saloon fwd Facing



ICON - Main Saloon



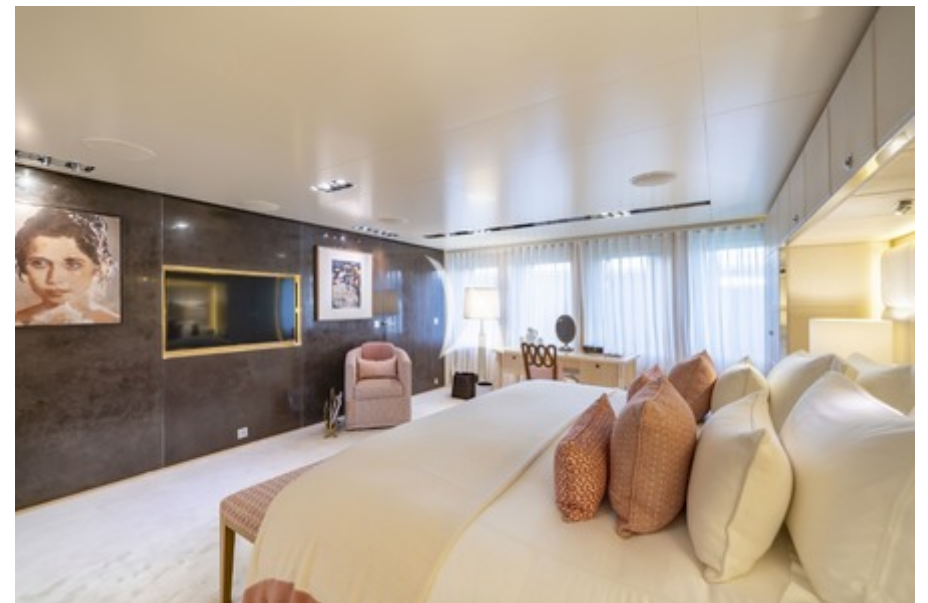
ICON - Dining area



ICON - Dining area



ICON - Master Suite



ICON - Master Suite



ICON - Master ensuite



ICON - Starboard Guest Cabin



ICON - Starboard Guest Cabin ensuite



ICON - Port Double Cabin



ICON - Starboard Guest Cabin



ICON - Port Double Cabin



ICON - Office



ICON - Double Cabin - Upper Deck



ICON - Upper Double Cabin ensuite



ICON - Staff Cabin



ICON - Sky Lounge



ICON - Sky Lounge



ICON - Upper deck aft



ICON - Upper deck aft



ICON - Bridge deck aft



ICON - Bridge deck aft



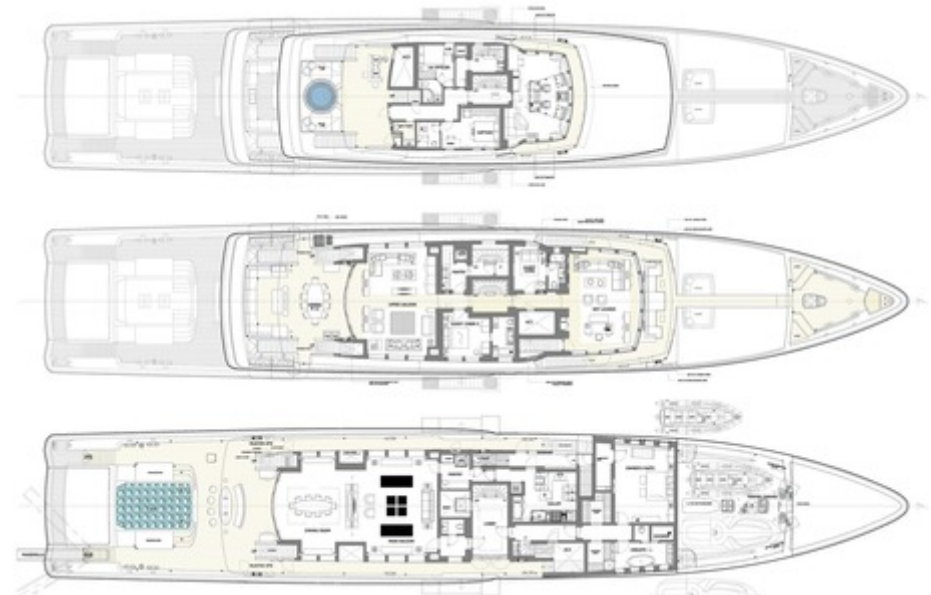
ICON - Gym



ICON - Gym



ICON - Layout



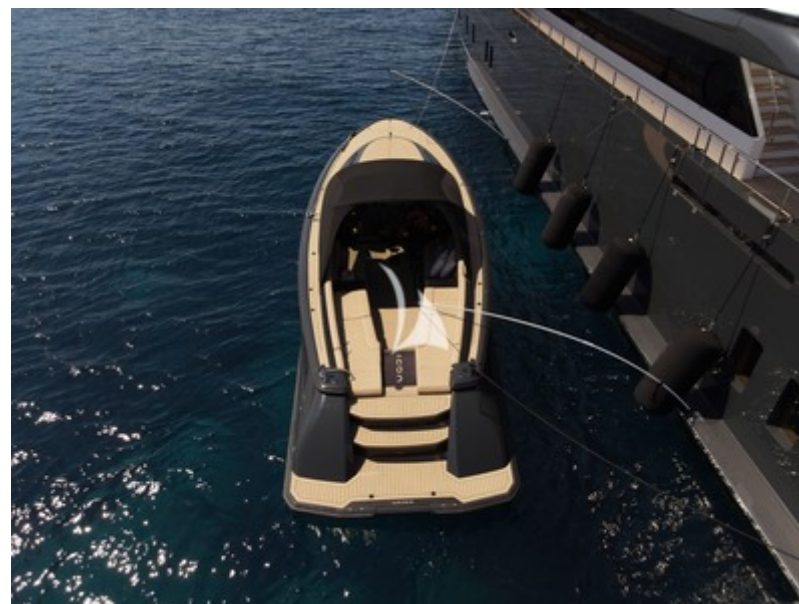
ICON - Layout



ICON - Layout



ICON - with tenders 2021



ICONIC - Wajer 38 - 2021

SPECIFICATIONS

ACCOMMODATION

Number of Guests: 12

Number of Cabins: 7

Cabin Configuration: 1 Single, 2 Double, 4 Convertible

Bed Configuration: 2 King, 2 Queen, 5 Single

EQUIPMENT

Engines: 2 x MTU 12V4000 M71

3 x Generator sets Sandfirden

Quantum zero speed Stabilisers - cruising and at anchor

Watermakers (20,000 litres/day)

Bow Thruster

Cruising Speed: 13 knots

Fuel Consumption: 540 Litres/Hr

WATERSPORTS

Tenders + Toys: CHASE BOAT

MY ICONIC, a brand new Wajer 38' (2x260hp Volvo Penta)

TENDERS

1 x Long island 26ft with 315hp inboard engine

1 x 7.8m Rib X with Mercruiser 270hp diesel in board engine

1 x MOB 25hp beach drop off tender

TOYS

2 x Yamaha 4stroke VXR 180hp jet ski

1 x Yamaha stand up jet ski

2 x Sea bobs

2 x water skis and slalom ski

3 x Wake boards

5 x Skurf boards (variable shapes)

2 x Kayaks (2 man)

2 x Paddle boards (inflatable)

1 x JOBE Air stream tube

2 x JOBE Doughnuts

3 x Nautiboy tender/toy platforms

4 x Scuba diving sets (for rendezvous diving)

14 x Snorkeling sets (cressi)

10 x Fins for snorkeling (cressi) + 3x kids fins

1 x Banana 5-seater

Fishing gear (recreational)

Miscellaneous beach toys (balls, bats, American footballs, volleyball, boules)

Golf mat, golf clubs and eco friend golf balls

Sauna

Massage room

Beach club day head and shower

Jacuzzi (bridge deck)

Swimming pool (main aft deck)

RYA training center for PWC

CHILDREN

Full range of toys and activities.

LAYOUT



Disclaimer

This document is not contractual. All specifications are given in good faith and offered for informational purposes only. The publisher and company do not warrant or assume any legal liability or responsibility for the accuracy, completeness, or usefulness of any information and/or images displayed. Yacht inventory, specifications and charter prices are subject to change without prior notice. None of the text and/or images used in this brochure may be reproduced without written consent from the publisher.