

MANGUSTA OCEANO 43#03 – EVA.4EVA

CAREFULLY USED YACHT



BUILDER: OVERMARINE GROUP

YEAR: 2019
ASKING PRICE: € 23.900.000

VAT: NOT PAID
FLAG: BRITISH

PORT OF REGISTRY: GIBRALTAR
LOCATED: PORT OF ZADAR, CROATIA

TYPE OF YACHT

Twin-screw diesel ocean going motor yacht of contemporary design, in the style of the Mangusta motor yachts, with a displacement hull form type. Propulsion comes from twin diesel engines, directly coupled to fixed pitch propellers (in-line configuration).

HULL

Steel Hull and Aluminium Superstructure, with appropriately spaced transversal and longitudinal stiffeners. Stainless Steel has been used when necessary to avoid corrosion problems.

CLASSIFICATION

ABS*A1, (E), Yachting Service, (*), AMS. Vessel built according to MCA – LY3 compliance for Commercial Yacht Service unrestricted navigation.

DIMENSIONS

LENGHT OVERALL	43.04 M	141'2"
LENGHT ON WATERLINE	36.74 M	120'6"
BEAM	8.70 M	28'6"
HALF LOAD DRAFT	2.35 M	7'8"
DISPLACEMENT AT FULL LOAD	~ 410 T	904,000 LBS
DISPLACEMENT AT HALF LOAD	~ 375 T	827,000 LBS
GROSS TONNAGE	451 GT	

TANK CAPACITY

FUEL CAPACITY	~ 65,300 L	17,250 US GALS
WATER CAPACITY	~ 13,500 L	3,500 US GALS
GREY & BLACK WATER	~ 8,300 L	2,200 US GALS

PROPULSION

MAIN ENGINES POWER	2 x MTU 12V2000 M72 1450HP (1080kW) @ 2250 RPM
HOURS	PORT: 1377 / STBD: 1381
STABILIZER	CMC MARINE model STABILIS ELECTRA SE160 ZERO SPEED stabilizers with 2 x 3,0 m2 fins
GENERATORS	2 X KOHLER 100 EFODJ – each 99 kW capacity
HOURS	PORT: 3760 / STBD: 3777

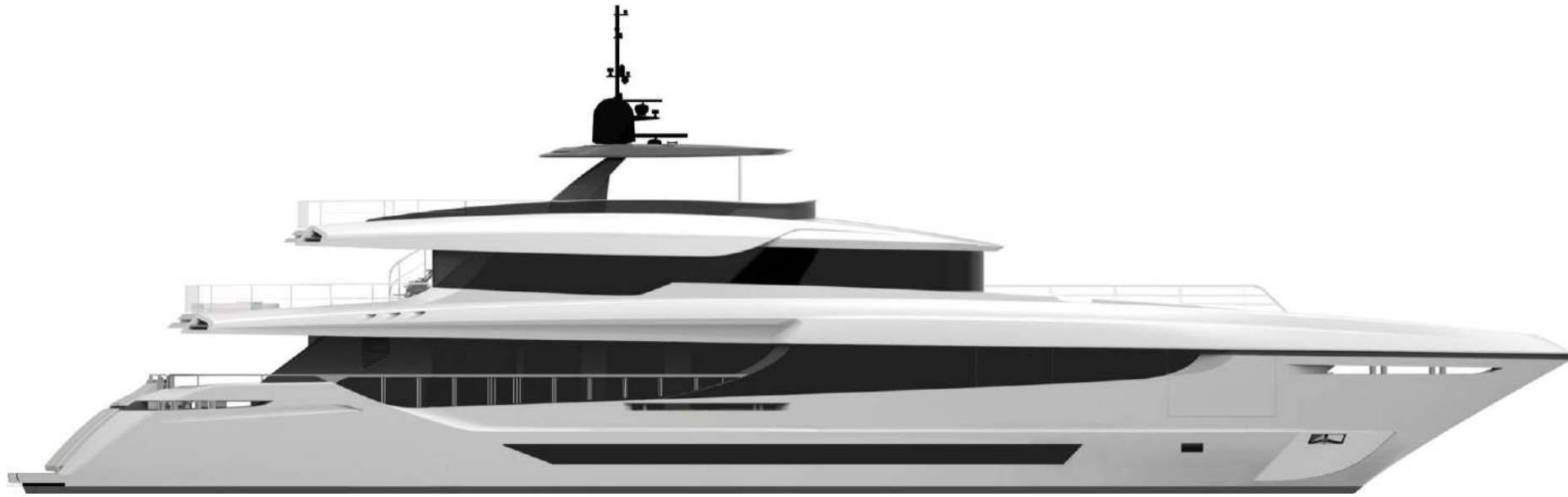
PERFORMANCE

MAX SPEED HALF LOAD	~ 15 KNOTS
CRUISING SPEED HALF LOAD	~ 11 KNOTS
RANGE AT CRUISING SPEED	~ 4500 NAUTICAL MILES

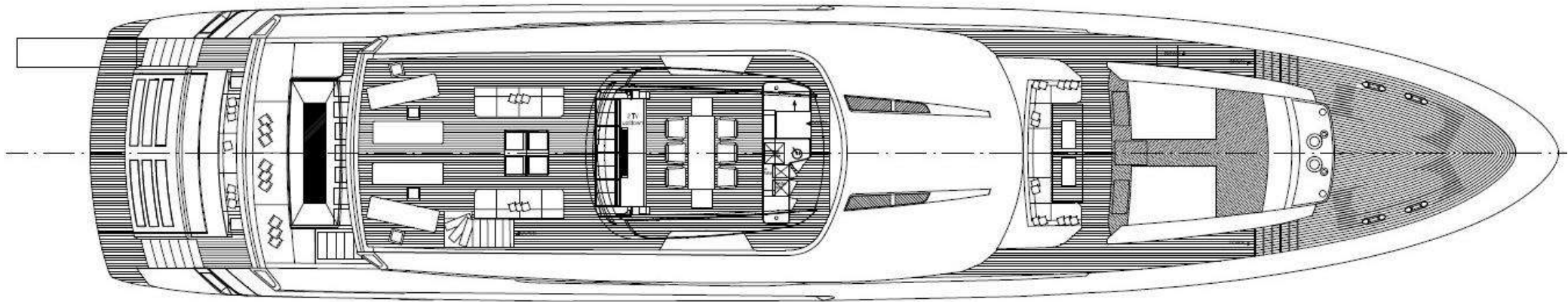
ACCOMMODATION

GUEST CABINS	1 OWNER + 2 VIP DOUBLE + 2 TWIN GUEST (with additional Pullman bed each)
CREW CABINS	1 CAPTAIN + 3 TWIN CREW

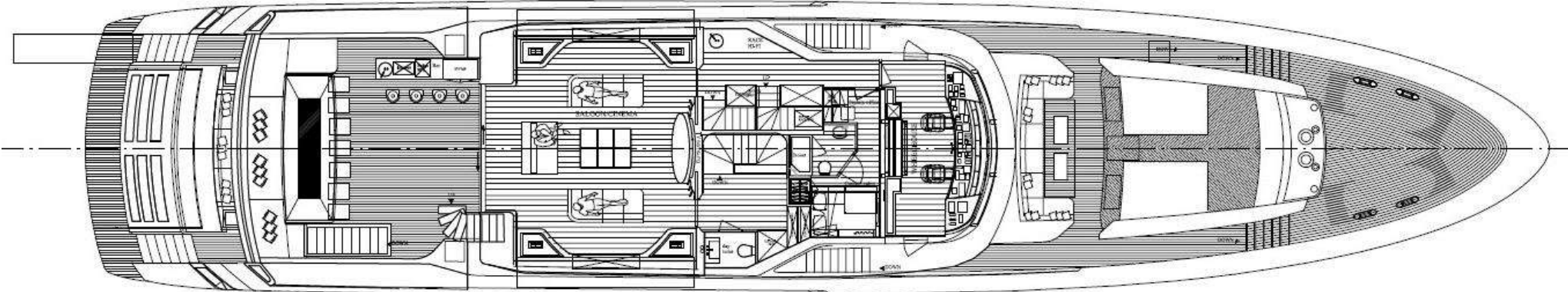
PROFILE



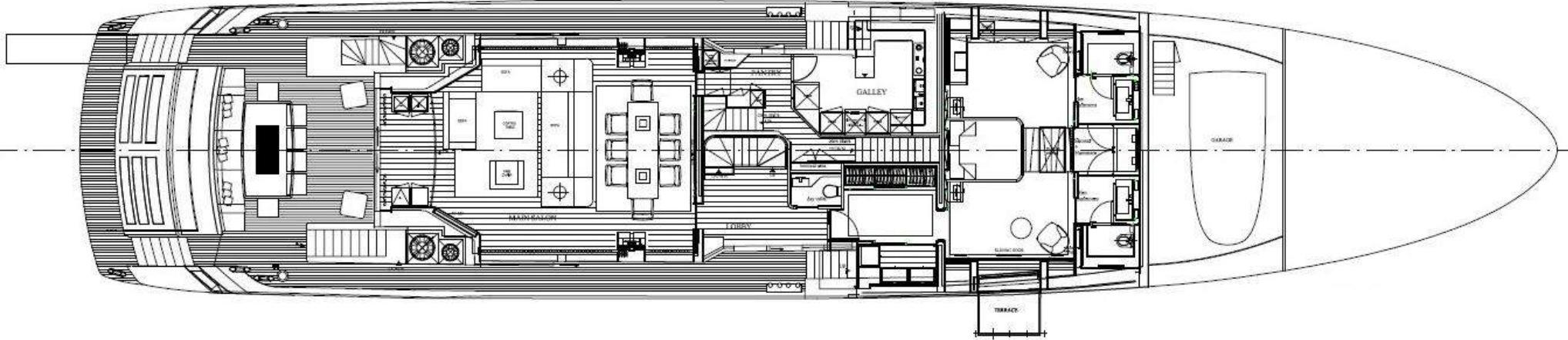
SUN DECK



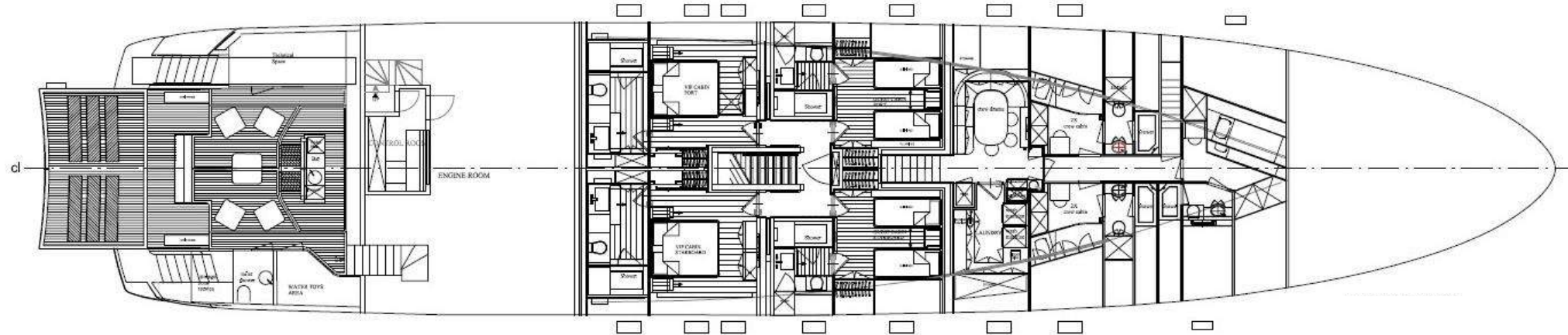
UPPER DECK



MAIN DECK



LOWER DECK



FULL OPTIONAL LIST

- MCA (LY3) compliance for Commercial Yacht Service unrestricted navigation
- Tender CASTOLDI 16 (5.08m) with 110hp. YANMAR diesel engine and jet drive
- SACS STRIDER 10 RIB chase boat with 2 x MERCURY Verado 350hp. outboard engines (450 hours)
- 2 x SEADOO Spark Trixx 2-UP 90hp. jet skis
- ATLAS 2000 removable carbon-fiber crane for jet ski launch (500kg. capacity)
- 4 x SEABOB (1 x F5SR, 1 x F5S, 2 x F5)
- FUNAIR inflatable swimming pool (6 x 6m) and floating dock (7.40 x 10.32m overall dimension)
- Inflatable water slide
- MULTIPLEX awning system for Upper Deck, Sundeck and Foredeck
- Shore Power Frequency Converter
- Electro-hydraulic automatic side boarding ladder
- Fully automatic side balcony in Owner's suite
- Steam shower in Owner's bathroom
- 2 x sliding doors in Main Saloon (port and starboard)
- SEALUX video on demand system (MAIN DECK HIFI)
- SEATEL Satellite TV system (SAT ANTENNA)
- SAILOR 900 V-SAT satellite communication and data system
- FLIR night vision camera (NAVIGATION SYSTEMS & CCTV N° 01 M-SERIES FLIR SYSTEM M-625XP 9HZ)
- Underwater lights (14 LED)

PROPULSION

Two MTU 12V2000 M72 four stroke marine diesel propulsion engines producing 1450hp. (1080kW) each. Each engine is fitted with a flanged-on ZF 3350 marine transmission gearbox and a direct shaft line with fixed pitch propellers.

STEERING SYSTEM

Steering hydraulic system

DIESEL GENERATOR

Two KOHLER model 100 EFODJ marine generator, each 99 kW, 400VAC/3ph/50Hz

BOW THRUSTER SYSTEM

CMC Marine DUALIS BTM 85EA model – 85kW 400V/3ph/50Hz

STABILIZER SYSTEM

2 Stabilizers by CMC Marine Stabilizing Fins STABILIS ELECTRA SE160 model - 3,0 sqm for zero speed and underway. Power supply 400VAC/3ph/50Hz

ONBOARD SYSTEMS

FUEL SYSTEM

- Fuel Purifier: 1x NFV KFWA2by (Mtu supply) 400VAC/3ph/50Hz – 1668lph
- Fuel Transfer Pump: 2x el/pumps Gianneschi ACB 331/B 400V/3ph/50Hz (or equivalent) – Max 7,2 m³/h – Max 30m;
- Fuel Priming Pump: 1x el/pumps Gianneschi CP 20/1G 24VDC (or equivalent);
- Tender Filling Pump: 1x el/pumps Gianneschi PE56 (or equivalent);
- Engine Fuel Prefilter: Parker DFBO10/5micron - Duplex (Mtu supply) with water alarm sensor
- DDGG Fuel Prefilter: Racor (DUPLEX) 75/500 MAXM (30micron) with water alarm sensor

BILGE/FIRE-FIGHTING SYSTEM

- 2x pump Gianneschi ACB 531 (or equivalent) – 400VAC/3ph/50Hz
- 1x Bilge Oily Water Separator in accordance with Marpol Annex I
- 1x Emergency Pump (Diesel) outside Engine Room - Gianneschi M ACB 531

AIR CONDITIONING SYSTEM

One seawater cooled tempered water unit shall be installed in the engine room. The system will provide cool air in the summer and hot air in the winter time.

- n° 04 Mod. 604NT CHILLER ~4x 8kW;
- n° 04 independent units/compressors
- each unit driven through Inverter
- electric supply 400V - 3 phases - 50 Hz;
- total refrigeration output 4x 120.000 BTU/h;
- Sea water/gas heat exchanger made out of Cu Ni elements
- Fresh water/gas heat exchanger made out of AISI 316 elements
- Display with visualization of inlet/outlet treated water temperature;
- System totally enclosed with noise insulated Aluminium casing.

DECK EQUIPMENT

- Two Posidonia anchors Galvanized High Tensile Steel of 320 Kg (each) mod. High Holding Power.
- 2 X 19mm 140m galvanized chain
- Two Vertical Capstans 4 kW 400V/3ph/50Hz or equivalent on the aft deck, one Port and one Stbd.
- One stern gangway, electro hydraulic type, 500 mm walk width, max load 150 kg, ~6m length. The gangway has swiveling and tilting capabilities (15° both up and down). Remote and local controllers
- One accommodation ladder (aluminium construction with teak treads), electro hydraulic type, 500 mm walk width, max load 150 kg, remote and local controllers. Ladder is housed in horizontal position under the main deck on starboard side. Lighting, gratings and back plate and fitted with fixed platform, stainless steel stanchions and rope rails at top platform. Accommodation Ladder control is through a fixed panel
- One electro hydraulic swim ladder is provided, fitted inside Stern Door and used when door is Open. Ladder is made out of Stainless steel with teak steps
- Fwd "Infinity Pool", having a capacity of about 3.5m³:
 - Sea water supply and "in line heater" having a capacity of 9+9kW.
 - Hydro-massage with "nozzles" outlet position according to final geometry of the pool.
 - Lighting System having number/positions of lights according to to final geometry of the pool.

NOISE, VIBRATION AND INSULATION MEASURES

Target has been to build the quietest possible yacht with an optimum internal climate. From the earliest stage of the design work all the way to the final completion of the yacht all measures have been taken to reach these objectives.

The following items have been taken into consideration:

- Flexible installation of engines, gears and gen-sets
- Structure under the main deck in the engine room
- Construction of casings, ventilation ducts, etc.
- Application of absorbing compounds in specific areas
- Flexible installations of all noise and vibration producing equipment items
- Expansion joints in pipelines
- Mufflers and sound dampers on Main Engines and Generator exhaust

SAFETY EQUIPMENT

ACCORDING TO CLASS REQUIREMENT

- LIFERAFTS 4 X 10 PERSON
- FOUR LIFEBOOYS, (TWO WITH SMOKE SIGNAL AND LIGHT, TWO WITH 30 M BUOYANT LINES) INSTALLED IN SPECIFIC RECESSES. PAINTED WITH NAME OF YACHT AND PORT OF REGISTRY
- ADULT & CHILD LIFEJACKETS

HOUSEHOLD APPLIANCES

SUN DECK

- N° 01 ICE CUBE MAKER
- N° 01 REFRIGERATOR
- N° 01 WINE COOLER – LIEBHERR

UPPER DECK

- N° 01 ICE CUBE MAKER
- N° 01 REFRIGERATOR

MAIN DECK

PANTRY

- N° 01 WINE COOLER – LIEBHERR
- N° 01 ICE CUBE MAKER

OWNER SUITE

- N° 01 REFRIGERATOR

SALON AREA

- N° 01 ICE CUBE MAKER
- N° 01 REFRIGERATOR

GALLEY

- N° 01 OVEN - MIELE H 6890 BP
- N° 01 HOT PLATES - MIELE KM 6386
- N° 01 EXHAUST HOOD - MIELE DA 3490
- N° 01 MICROWAVE, WITH STAINLESS STEEL FRONT - MIELE M 6260
- N° 01 DISHWASHER - MIELE G 7856
- N° 01 CUSTOM FRIDGE / FREEZER

• BEACH AREA

- N° 01 ICE CUBE MAKER
- N° 01 REFRIGERATOR

LOOSE ELECTRICAL APPLIANCES

- N° 01 NESPRESSO LATTISIMA
- N° 01 KETTLE CREW MESS
- N° 01 TOASTER GRILL TEFAL
- N° 03 DYSONS V8 VACCUMS
- N° 01 PHILIPS PERFECT CARE IRON
- N° 01 HESTIA ION
- N° 01 BOSCH TOASTER WHITE
- N° 01 JURA COFFEE MACHINE
- N° 01 NESPRESSO AEROCHINO
- N° 01 CITRUSSETTA TEFAL
- N° 01 METRO SMALL FRIDGE
- N° 01 PLAY STATION
- N° 01 BRAUN KETTLE GUESTS
- N° 01 VALERA HAIRDRYER
- N° 04 PHILIPS HAIRDRYER

TENDER, CHASE BOAT AND JETSKI

TENDER

- 1 X CASTOLDI 16" (5.08m) with 110hp. YANMAR diesel engine and jet drive.

CHASE BOAT

- SACS STRIDER 10 RIB with 2 x MERCURY Verado 350hp. outboard engines (450 hours)



JETSKI

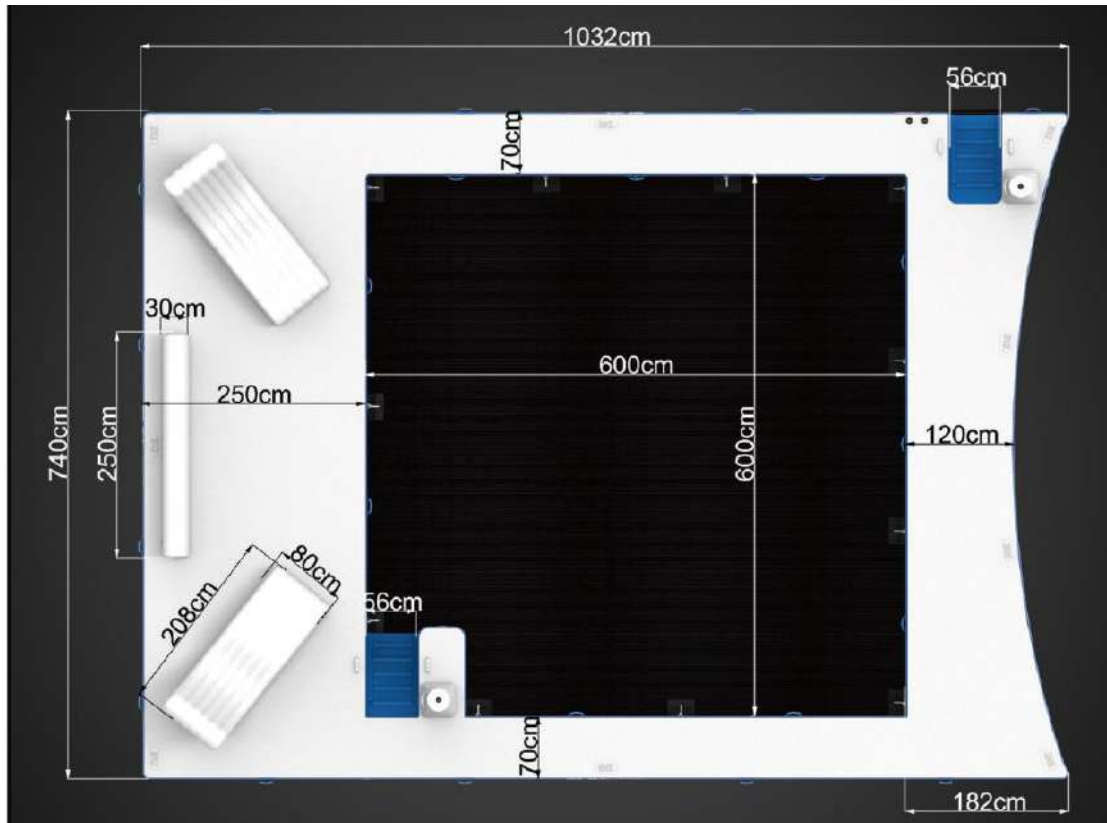
- 2 x SEADOO Spark Trixx 2-UP 90hp. Jetskis

WATER TOYS

- 4 X SEABOB (2X F5, 1X F5S, 1X F5SR)
- JOBE WATER CARPET 1 PCS.
- JOBE SUP PADDLE BOARD 1 PCS.
- JOBE SUP BOARD WITH SAIL 1 PCS.
- JOBE PADDLE STICK 4 PCS.
- JOBE WAKEBOARD 1 PCS.
- JOBE WAKEBOARD HANDLE 1PCS.
- FUN AIR SEA POOL 1 PCS.
- JOBE SEA-ESTA 3 PERSON 1 PCS JOBE STORM 2 PERSON 1 PCS.
- JOBE REVOLVE 2 PERSON 1 PCS.
- JOBE ANURA II 1 PCS.
- JOBE HALMET (XL, L, XS) 6 PCS.
- SEADOO ADULT JACKETS (XL, L) 6 PCS.
- JOBE KIDS JACKETS 4 PCS.
- JOBE WETSUIT (XL, L, S) 6 PCS.
- JOBE DIPPER BOARD 3 PCS.
- SHIMANO-PENN FISHING RODS 4 PCS.
- FISHING BOX 2 PCS.
- YACHT BIKE 2 PCS.
- MARES SCUBA MASK+SNORKELS ADULT 3 PCS.
- MARES SCUBA MASK+SNORKELS KIDS 2 PCS.
- SUBEA SUB MASK 2 PCS.
- AQUA LUNG FINS 5 PCS.
- SPEEDO SWIM GLASS 3PCS.

FUNAIR

- FUNAIR INFLATABLE SWIMMING POOL (6 X 6M) AND FLOATING DOCK (7.40 X 10.32M OVERALL DIMENSION)
- INFLATABLE WATER SLIDE



NAVIGATION SYSTEMS & CCTV

WHEELHOUSE

- N° 05 MONITOR FURUNO MU190E 19" WHEELMARK APPROVED – IMO
- N° 01 MAXSEA NAVIGATION PC ECS - CHART SYSTEM
- N° 01 FURUNO GPS DGPS GP-170D WHEELMARK APPROVED IMO
- N° 01 FURUNO GPS GP-33 GP-150
- N° 01 SIMRAD CG80 - GYROCOMPASS - WHEELMARK APPROVED-IMO
- N° 01 HR80 REPETER GYRO AR80
- N° 01 FURUNO RADAR #1 ARPA X BAND FAR-2xx8 WHEELMARK APP. IMO 12KW ANTENNA RADIATOR ASS. XN20AF 6.5FT
- N° 01 FURUNO RADAR #1 ARPA X BAND FAR-2xx8 WHEELMARK APP. IMO 12KW ANTENNA RADIATOR ASS. XN12AF 4FT
- N° 01 FURUNO NAVIGATION ECHOSOUNDER WHEELMARK APPROVED FE-800 LESS HULL UNIT + TRANSDUCER 50B-6B PLASTIC
- N° 01 FURUNO DOPPLER SPEEDLOG SYSTEM WHEELMARK APPROVED DOPPLER SPEED LOG FURUNO DS80
- N° 01 FURUNO WIND TRANSDUCER FI-5001
- N° 02 FURUNO FI-70 MULTIFUNCTIONS DISPLAY DATA REPETER
- N° 01 AP70 AUTOPILOT
- N° 01 AC80A AUTOPILOT PROCESSOR
- N° 01 SIMRAD RC 42 COMPASS RATE
- N° 01 FURUNO AIS TRANSPONDER FA 170 CLASS A
- N° 01 FURUNO FURUNO BNWAS SYSTEM WHEELMARK APPROVED
- N° 01 FM 8900S GMDSS CLASS A
- N° 01 FURUNO RB-8900 REMOTE HANDSET
- N° 01 SIMRAD VHF/AIS RS90
- N° 01 FURUNO SSB HF/MF GMDSS CLASS A - WHEELMARK APPROVED IMO FS1575 TRANSCEIVER UNIT DSC 150W
- N° 01 FURUNO NAVTEX NX700
- N° 01 FURUNO INMARSAT STD C / LRIT - WHEELMARK APPROVED IMO FELCOM18 INMARSAT-C + N°02 SSAS ALERT UNITS IC307
- N° 01 INTERCOM SYSTEM PHONOTECH CIS 3101
- N° 01 M-SERIES FLIR SYSTEM M-625XP 9HZ

WING STATIONS

- N° 02 FURUNO FI-70 MULTIFUNCTIONS DISPLAY DATA REPETER
- N° 02 SIMRAD VHF HS 35 WIRELESS (ONE FOR EACH STATION)

CREW MESS / DINETTE

- N° 01 MONITOR HATTELAND HD 15T21MMD CCTV
- N° 01 FURUNO FI-70 MULTIFUNCTIONS DISPLAY DATA REPETER
- N° 01 9001 - INDOOR UNIT, WALL MOUNTED
- N° 01 FURUNO FURUNO BNWAS BR 540

CAPTAIN CABIN

- N° 01 FURUNO FURUNO BNWAS BR 540
- N° 01 FURUNO FI-70 MULTIFUNCTIONS DISPLAY DATA REPETER

CREW CABIN STBD. 1ST OFFICER

- N° 01 01 FURUNO FURUNO BNWAS BR 540

ENGINE CONTROL ROOM

- N° 01 X 9003 - SUBSTATION FOR HEADSET
- N° 01 9001 - INDOOR UNIT, WALL MOUNTED
- N° 01 MONITOR HATTELAND HD 15T21MMD CCTV

STEERING GEAR ROOM

- N° 01 RF14XU FEEDBACK AUTOPILOT
- N° 01 COMPASS REPETER RD-50
- N° 01 9003 - SUBSTATION FOR HEADSET

STEERING GEAR ROOM

- N° 01 9052 – INTERCOM SUB STATION

CCTV EQUIPMENT

- N° 10 CCTV AXIS CAMERA PTZ P5512E (1 X ARCH, 1 X FLYBRIDGE, 3 X EXTERNAL MAIN DECK, 1 X EXTERNAL UPPER DECK, 2 X ENGINE ROOM, 1 X GARAGE, 1 X BEACH AREA)
- N° 02 AXIS CAMERA P1214E (ANCHOR PORT & STBD.)
- N° 01 CCTV SERVER VIDEORECORDER NEXTWORK NXVISION D800 (IP CCTV SERVER, UP TO 8 IP CAMERAS, WEB ACCESS, 1 TB RAID1 DISK SPACE)
- N° 02 MONITOR 19" HATTELAND HD 19T21 MMD CONTROL ROOM, CREWMESS

- N° 01 CAMERA BROADCAST MODULE
- N° 03 CONTROL STATION 1 X CREW MESS, 1 X CONTROL ROOM, 1 X BRIDGE

NETWORKING

- N° 04 CISCO SG 300-28P, 24 PORTS 10/100/1000 MBPS
- N° 01 CISCO 2500 WIRELESS CONTROLLER
- N° 13 CISCO AIRONET 1130 802.11G LWAPP
- N° 01 PEPLINK PEPWAVE BR-1 4G ACCESS ROUTER
- N° 01 SERVICE SELECTOR NXWALL
- N° 01 HARBOUR 2.4 GHZ WI-FI ANTENNA IEEE 802.11B/G

TELEPHONE SYSTEM

- N° 01 ADVANCED IPBX
- N° 02 DOOR PHONE
- N° 02 GRANDSTREAM GXP-2140
- N° 17 INCOM ICW-1000G WI-FI PHONE

SAT ANTENNA

- N° 01 SEATEL TV80
- N° 01 SAILOR V-SAT 900

MAIN DECK HI-FI

DECK SALON

- N° 01 TV 65" SAMSUNG 7500 SERIES
- N° 01 JM LAB CUB2 SUBWOOFER
- N° 05 JM LAB IW 1002 SPEAKERS
- N° 01 A/V RECEIVER DENON AVR X-4200 SERIES
- N° 01 SONY BDP-S1500 REGION FREE
- N° 01 SEALUX HD/3D A/V CLIENT
- N° 01 APPLE IPAD MINI 4 16GB
- N° 01 SATELLITE DECODER (OWNER'S SUPPLY)

AFT MAIN DECK

- N° 04 SONANCE XTR 6,5" WATERPROOF LOUDSPEAKER (ZONE 2 MAIN DECK SALON AMPLIFIER)

OWNER'S SUITE

- N° 01 TV 65" SAMSUNG 7500 SERIES
- N° 01 JM LAB CUB2 SUBWOOFER
- N° 05 JM LAB IW 1002 SPEAKERS
- N° 01 A/V RECEIVER DENON AVR X-4200 SERIES
- N° 01 SONY BDP-S1500 REGION FREE
- N° 01 SEALUX HD/3D A/V CLIENT
- N° 01 APPLE IPAD MINI 4 16gb
- N° 01 SATELLITE DECODER

OWNER'S BATHROOM

- N° 02 JM LAB IW 106 SPEAKERS BATHROOM (X2 BATHROOM)

UPPER DECK HI-FI

CINEMA/SALON

- N° 01 TV 78" SAMSUNG CURVED UHD 4K 8500 SERIES
- N° 01 JM LAB CUB2 SUBWOOFER
- N° 05 JM LAB IW 1002 SPEAKERS
- N° 01 A/V RECEIVER DENON AVR X-4200 SERIES
- N° 01 SONY BDP-S1500 REGION FREE
- N° 01 SEALUX HD/3D A/V CLIENT
- N° 01 APPLE IPAD MINI 4 16gb
- N° 01 SATELLITE DECODER

AFT UPPER DECK

- N° 04 SONANCE XTR 6,5" WATERPROOF LOUDSPEAKERS
- N° 01 APPLE AIRPORT EXPRESS

FORE UPPER DECK

- N° 06 SONANCE XTR 6,5" WATERPROOF LOUDSPEAKERS
- N° 01 APPLE IPAD MINI 4 16gb

SUNDECK HI-FI

- N° 02 TV 48 LED SAMSUNG 7500 SERIES (UP&DOWN)
- N° 06 SONANCE XTR 6,5" WATERPROOF LOUDSPEAKERS
- N° 01 A/V RECEIVER DENON AVR X-1200 SERIES
- N° 01 SEALUX HD/3D A/V CLIENT
- N° 01 APPLE IPAD MINI 4 16gb
- N° 01 SATELLITE DECODER

BEACH AREA HI-FI

- N° 02 SONANCE XTR 6,5" WATERPROOF LOUDSPEAKERS
- N° 01 A/V RECEIVER DENON AVR X-1200 SERIES
- N° 01 SEALUX AUDIO CLIENT
- N° 01 APPLE IPAD MINI 4 16gb

CABIN DECK HI-FI

FORE PORT GUEST CABIN

- N° 01 TV 40"LED SAMSUNG 7000 SERIES
- N° 02 JM LAB IW 706 SPEAKERS
- N° 01 JM LAB CUB2 SUBWOOFER
- N° 01 A/V RECEIVER DENON AVR X-1200 SERIES
- N° 01 SONY BDP-S1500 REGION FREE
- N° 01 SEALUX HD/3D A/V CLIENT
- N° 01 APPLE IPAD MINI 4 16gb
- N° 01 SATELLITE DECODER

FORE STARBOARD GUEST CABIN

- N° 01 TV 40"LED SAMSUNG 7000 SERIES
- N° 02 JM LAB IW 706 SPEAKERS
- N° 01 JM LAB CUB2 SUBWOOFER
- N° 01 A/V RECEIVER DENON AVR X-1200 SERIES
- N° 01 SONY BDP-S1500 REGION FREE
- N° 01 SEALUX HD/3D A/V CLIENT
- N° 01 APPLE IPAD MINI 4 16gb
- N° 01 SATELLITE DECODER

AFT PORT GUEST CABIN

- N° 01 TV 40"LED SAMSUNG 7000 SERIES
- N° 02 JM LAB IW 706 SPEAKERS
- N° 01 JM LAB CUB2 SUBWOOFER
- N° 01 A/V RECEIVER DENON AVR X-1200 SERIES
- N° 01 SONY BDP-S1500 REGION FREE
- N° 01 SEALUX HD/3D A/V CLIENT
- N° 01 APPLE IPAD MINI 4 16gb
- N° 01 SATELLITE DECODER

AFT STARBOARD GUEST CABIN

- N° 01 TV 40"LED SAMSUNG 7000 SERIES
- N° 02 JM LAB IW 706 SPEAKERS
- N° 01 JM LAB CUB2 SUBWOOFER
- N° 01 A/V RECEIVER DENON AVR X-1200 SERIES
- N° 01 SONY BDP-S1500 REGION FREE
- N° 01 SEALUX HD/3D A/V CLIENT
- N° 01 APPLE IPAD MINI 4 16gb
- N° 01 SATELLITE DECODER

CREW AREA HI-FI

CREW MESS

- N° 01 TV LED SAMSUNG 28"
- N° 02 JM LAB IW 106 SPEAKERS
- N° 01 A/V RECEIVER DENON AVR X-1200 SERIES
- N° 01 APPLE IPAD MINI 4 16gb
- N° 01 SATELLITE DECODER

CREW CABIN X2

- N° 01 TV LED SAMSUNG 22"
- N° 01 SATELLITE DECODER

GALLEY

- N° 01 BEATS PILL

FIRST OFFICER CABIN

- N° 01 TV LED SAMSUNG 22"
- N° 01 SATELLITE DECODER

CAPTAIN CABIN

- N° 01 TV LED SAMSUNG 28"
- N° 02 JM LAB IW 106 SPEAKERS
- N° 01 A/V RECEIVER DENON AVR X-1200 SERIES
- N° 01 SEALUX HD/3D A/V CLIENT
- N° 01 APPLE IPAD MINI 4 16gb
- N° 01 SATELLITE DECODER

DECK INVENTORY LIST

BRIDGE / OFFICE

- HP LAPTOP PAVILION MOD.14-CE0507SA 3 PCS.
- LED LANSER HEAD LAMP 3PCS.
- LED LANSER BIG EMERGENCY LAMP
- LED LANSER SMALL (ENGINEER-BRIDGE) 2 PCS.
- WATERPROOF SPOTLIGHT 1 PCS.
- BINOCULAR MINI WATERPROOF 1 PCS.
- BROTHER DCP-J105 PRINTER 1 PCS.
- LENOVO TABLET
- BINOCULAR STEINER NAVIGATOR PRO 2 PCS.
- NUM AXES TELEMETRE LASER 1011

SUN DECK

- N° 06 CHAIRS
- N° 06 COVERS
- N° 04 LOUNGERS
- N° 04 PILLOWS
- N° 04 MATTRESS
- N° 04 COVERS FOR LOUNGERS
- N° 04 SEAT CUSHION
- N° 06 SEAT CUSHION SOFA – PORT – STBD
- N° 06 BACKREST SOFA – PORT – STBD
- N° 02 COVERS SOFA – PORT – STBD
- N°01 LADDER FOR MAST
- N° 04 LIFE RAFTS
- COVER FOR TABLE
- BAR COVER
- GRILL NAPOLEON
- N° 15 COVERSSUNDECK

- ORBITREK GYM
- SET BOX WEIGHTS

UPPER DECK

- N° 04 FIXED BAR CHAIR
- N° 04 COVER
- N° 08 CHAIRS, N° 08 COVERS & N° 16 CUSHION ON CHAIRS
- N° 06 CUSHION & N° 08 BACKREST
- N° 01 BIG COVER FOR TABLE

MAIN DECK

- N° 02 COVERS TABLE AND SOFA
- N° 08 CHAIRS & N° 08 COVERS
- N° 01 BIG SOFA, N° 04 CUSHION & N° 04 FOR THE BACKREST
- N° 02 TEAK SMALL LATERAL LADDER
- N° 02 ARMCHAIR, N° 02 CUSHION & N° 02 BACKREST, N° 02 COVERS

BEACH AREA

- N° 04 ARMCHAIR
- N° 04 CUSHION
- N° 04 BACKREST
- N° 04 COVERS
- N° 02 LOUNGERS, N° 02 MATTRESS & N° 02 COVER
- N° 01 SMALL TABLE
- KARCHER MACHINE FOR CLEANING TEAK
- N° 02 SMALL FENDERS FOR PLATFORM
- N° 04 WHITE CHAIR FOR PLATFORM
- N° 01 ORANGE ELECTRICAL CABLE
- N° 01 TRASH CAN
- CARPETS EVA. 4EVA

BOW

- N° 04 MATTRESS FOR POOL
- N° 01 BIG COVER
- N° 01 COVER & N° 08 CUSHION - BRIDGE SOFA
- N° 02 COVER FOR SMALL TABLE
- N° 02 COVER FOR PORT AND STBD COMMANDS
- ATLAS 2000 CRANE
- N° 04 STAINLESS STEEL CARRIER FOR SEA-DOO
- FENDERS 22PCS
- N° 02 PUMPS FOR FENDERS
- N° 03 TELESCOPIC BOAT HOOK
- FIRE-FIGHTER SUIT & N° 02 DRAGGER BOTTLE
- DRAGGER MASK BREATHING
- N° 01 SUB BOTTLE
- N° 04 WHITE HOSES & N° 01 YELLOW
- N° 01 AIR HOSE
- SHURHOLD SQUEEGEE
- SHURHOLD SILICONE BLADE
- MOORING LINES: 2X YELLOW 100M, 4X 25M WINTER, 100M BLACK, 6X 25M SUMMER
- PILOT LADDER
- SHURHOLD WASH MITT
- SHURHOLD HANDLE
- SHURHOLD YELLOW BROOM
- SHURHOLD YELLOW BRUSH

BOW GARAGE

- N° 04 SMALL FENDERS
- N° 02 TRASH CAN
- MARES CREW SUB MASK
- MARES CREW SUB SUIT
- MAKITA VACUUM CLEANER

INTERIOR INVENTORY LIST

CHINA HERMES MOSAIQUE AU 24 PLATINUM

- N° 21 DINNER PLATES
- N° 12 BIG DINNER PLATES
- N° 24 SOUP PLATES
- N° 23 DESSERT PLATES
- N° 22 BIG CUPS, SAUCERS
- N° 18 TEA CUPS, SAUCERS
- N° 20 MUGS
- N° 01 CREAMER
- N° 01 SUGAR BOWL
- N° 01 CAKE PLATTER
- N° 02 DEEP ROUND PLATTER
- N° 01 OVAL PLATTER 42 CM
- N° 01 OVAL PLATTER 37 CM
- N° 02 DEEP SALAD BOWL
- N° 01 FLAT SALAD BOWL
- N° 10 SOYA SAUCERS
- N° 12 SUSHI SQUARE PLATE
- N° 12 FIRST COURSE PLATE
- N° 12 SMALL BOWLS

HERING CHINA

- N° 12 DINNER PLATE
- N° 14 BIG DEEP PLATE
- N° 13 SMALL DEEP PLATE
- N° 02 OVAL SERVING PLATE
- N° 01 SUGAR BOWL
- N° 02 CREAMER

CUTLERY SAMBONET SKIN

- N° 24 TABLE KNIVES
- N° 24 TABLE FORKS
- N° 24 TABLESPOON
- N° 24 FISH FORKS
- N° 24 FISH KNIVES
- N° 24 DESSERT FORKS
- N° 24 DESSERT SPOONS
- N° 22 COFFEE SPOONS
- N° 03 SERVING FORKS
- N° 03 SERVING SPOONS
- N° 01 CAKE SERVER
- N° 24 STEAK KNIVES

GLASSES CHRISTOFLE GRAPHIK AND ROGASKA

- N° 29 OLD FASHIONED
- N° 20 HIGHBALLGLASSES
- N° 21 VODKA GLASSES
- N° 21 EXPERT CHARDONNAY GLASSES
- N° 07 CHAMPENOISE
- N° 20 JAZZY

TABLE ACCESSORIES GIO BANGARA

- N° 01 ICE BUCKET OCEAN
- N° 01 BOTTLE COOLER OCEAN
- N° 01 THERMAL CARAFE
- N° 01 CONDIMENT SET
- N° 04 ASHTRAYS
- N° 01 BASKET MAREA 20
- N° 02 STORAGE BASKETS
- N° 24 TABLE MATS

TABLE CLOTHS VARIOUS BRANDS

- N° 08 NAPKINS 50X45 OSTRICA
- N° 01 TABLE PROTECTOR
- N° 07 NAPKINS PURE LINEN
- N° 34 NAPKINS LINEN
- N° 01 PURE LINEN SAND CLOTH
- N° 21 PURE LINEN SAND NAPKINS
- N° 02 MAIN DECK CLOTHS G/W
- N° 02 UPPER DECK CLOTHS G/W
- N° 01 NAPKINS WHITE
- N° 24 NAPKINS GREY
- N° 29 NAPKINS 50X45 SAND
- N° 04 SALOON CLOTHS
- N° 33 NAPKINS

SAMBONET SERVING CUTLERY AND APPLIANCES

- N° 03 PASTRY PLIERS
- N° 02 FRUIT TONGS
- N° 02 SERVING FORKS
- N° 02 BIGGER SERVING FORKS
- N° 05 SERVING SPOONS
- N° 18 RICE SPOONS
- N° 02 SUGAR/CHEESE SPOONS
- N° 01 SPAGHETTI TONGS
- N° 02 ICE TONGS
- N° 07 ICE SPOON
- N° 02 SAUCE LADLE
- N° 04 BASIC LADLES
- N° 06 SERVING TONGS
- N° 02 HOLDERS WITH FISH DISH

- N° 02 HORS D'OEUVRE TRAY COMPARTMENT
- N° 02 HOLDERS WITH RECTANGULAR DISH
- N° 02 OVAL MEAT DISH
- N° 02 BOWLS SPHERE SMALL
- N° 02 BOWLS SPHERE MEDIUM
- N° 02 BOWLS SPHERE BIG
- N° 04 BREAD BASKETS
- N° 02 CAVIAR CUP
- N° 01 FRUIT STAND
- N° 02 NAPKINS HOLDERS
- N° 02 OVAL SAUCE BOAT
- N° 01 GRATED CHEESE POT WITH LID
- N° 01 SET – 12 PCS – PARTY ORIENTAL SPOONS
- N° 01 SET – 15 PCS – PARTY ORIENTAL FORKS
- N° 02 WINE COOLERS SPHERA
- N° 02 ROUND TRAYS CM.55
- N° 02 SILICONE MATS FOR CM.55
- N° 02 CAKE STAND

VARIOUS CUTLERY, SERVING ITEMS AND ACCESSORIES

- N° 02 PEUGEOT ESPRIT ROYAL SET
- N° 06 TEACUPS CRYSTAL
- N° 02 VILLERY&BOCH FRUIT BOWL
- N° 05 POOLS POTTEN CUPS
- N° 03 OVAL TRAY
- N° 11 SMALL BLACK SOYA BOWLS
- N° 16 SMALL BLACK WHITE BOWLS
- N° 06 EGG STAND METAL
- N° 02 SERVING PLATES BLACK
- N° 03 SERVING PLATES OVAL
- N° 16 EGG STAND WHITE

- N° 07 WHITE SQUARE CERAMIC BOWLS
- N° 01 SUGAR AND MILK SET
- N° 11 BLACK ROUND BOWLS
- N° 08 GLASS SQUARE BOWLS
- N° 01 GLASS BOWLS HOLDER
- N° 02 BLACK SAUCE BOTTLES
- N° 13 SMALL BLACK BOWLS SOYA
- N° 01 CAVIAR BOWLS
- N° 03 COCKTAIL SET
- N° 12 CHOPSTICKS PAIR
- N° 12 LONG SPOONS & HOLDERS
- N° 07 ORIENTAL BLACK SPOON
- N° 12 LOBSTER FORK
- N° 12 LOBSTER CRACKER
- N° 01 CRYSTAL VASES
- N° 03 GLASS VASES
- N° 24 SELLETI SPOONS BLACK
- N° 24 SELLETI KNIVES BLACK
- N° 23 SELLETI FORKS BLACK
- N° 12 SELLETI TEASPOONS BLACK
- N° 02 SCALES BEURER
- N° 03 WMS MUG 1,5 L
- N° 01 WMF MUG 1 L
- N° 24 COASTERS
- N° 03 ROUND WOODEN/METAL TRAY
- N° 06 SMALL RATTAN BASKET
- N° 03 SMALL ROUND BASKET
- N° 02 PVC TRAYS
- N° 06 MARINE BUSINESS PVC WINE GLASSES
- N° 06 MARINE BUSINESS PVC BUCKET
- N° 06 MAKE UP STORAGE CONTAINER

CREW BED LINEN

CAPTAIN CABIN

- N° 02 SET = 1 FITTED SHEET, 1 DUVET COVER, 2 PILLOWCASES

CREW CABIN

- N° 12 SET = 1 FITTED SHEET, 1 DUVET COVER, 1 PILLOWCASES (EACH CREW MEMBER GETS 2 SETS)

BATH TOWELS

CAPTAIN & CREW

- N° 02 SET = (40X60, 110X60, 120X150) PER EACH CREW MEMBER

FRETTE GUEST TOWELS

- N° 04 SMALL TOWELS BETULLA
- N° 06 BIG TOWELS BETULLA
- N° 05 BATHMATS BETULLA
- N° 06 WASHCLOTHES BETULLA
- N° 11 WASHCLOTHES GREY
- N° 02 BATHROBES BETULLA
- N° 09 BATH SHEET WHITE WITH BEIGE LINES
- N° 10 BATH TOWELS WHITE WITH BEIGE LINES
- N° 15 GUEST WHITE TOWELS WITH BEIGE LINES
- N° 05 BATHMATS WITH LINES
- N° 05 BATH TOWELS BLUE MINERAL
- N° 05 GUEST TOWELS B MINERAL
- N° 06 BATH SHEET B MINERAL
- N° 02 BATH MATS B MINERAL
- N° 03 BATHROBES B MINERAL
- N° 09 BATH TOWELS 3 LINES BLUE
- N° 03 GUEST TOWELS 3 LINES BLUE
- N° 06 BATH SHEET 3 LINES BLUE
- N° 02 BATH MATS 3 LINES BLUE
- N° 03 BATHROBES 3 LINES BLUE

FRETTE GUEST BEACH TOWELS

- N° 07 MINT WITH WHITE LOGO
- N° 05 WHITE WITH MINT LOGO
- N° 12 TOWELS WITH WRONG LOGO/SPARE

FRETTE GUEST LINEN SORTED BY CABINS

MASTER CABIN

- N° 04 WHITE FITTED SHEET
- N° 03 TOP SHEET
- N° 10 PILLOW CASES
- N° 05 SMALL PILLOW CASES
- N° 01 QUILTED BEDSPREAD
- N° 04 PILLOWS
- N° 02 SMALL PILLOWS
- N° 02 DUVET COVERS
- N° 01 DUVET
- N° 01 PLAID TATTOO

VIP CABINS

- N° 02 FITTED SHEETS WHITE
- N° 03 TOP SHEET WHITE
- N° 02 DUVET COVER
- N° 02 DUVET
- N° 12 PILLOW CASES WHITE
- N° 02 QUILTED BEDSPREAD
- N° 02 PLAID ROMANTIC
- N° 04 BROWN TOP SHEET
- N° 02 BROWN BOTTOM SHEET
- N° 10 BROWN PILLOW CASES
- N° 01 BROWN DUVET COVER
- N° 08 PILLOWS

TWIN CABINS

- N° 11 FITTED SHEETS WHITE
- N° 12 TOP SHEETS WHITE BLUE
- N° 13 PILLOW CASES
- N° 06 DUVETS
- N° 14 DUVET COVERS
- N° 06 PIQUET BEDSPREAD WHITE
- N° 06 PLAIDS AMELIE BLUE GREY

DAYHEADS TOWELS

LAVETTE WHITE 30X30CM X 13

FRETTE CHARTER GUEST LINEN SORTED BY CABINS

MASTER CABIN

- N° 03 TORTORA FITTED SHEET
- N° 03 TOP SHEETSHEET
- N° 06 PILLOW CASES
- N° 04 TORTORA DECORATIVE PILLOW CASES
- N° 01 BEDSPREAD SILVER
- N° 04 PILLOWS
- N° 04 DECORATIVE SMALL PILLOWS

VIP CABINS

- N° 06 WAFER FITTED SHEETS
- N° 06 WAFER TOP SHEET WAFER
- N° 12 PILLOW CASES WAFER
- N° 08 PILLOW CASES DECORATIVE MARBLE
- N° 02 BEDSPREAD GOLDEN
- N° 08 PILLOWS
- N° 04 DECORATIVE PILLOWS BEIGE

TWIN CABINS

- N° 12 FITTED SHEETS WHITE
- N° 12 TOP SHEETS WHITE BLUE LINE
- N° 12 PILLOW CASES
- N° 06 BEDSPREAD WHITE
- N° 12 PILLOWS
- N° 04 DECORATIVE PILLOWS BLUE

FRETTE CHARTER GUEST TOWELS

- N° 12 WASH CLOTHES BEIGE
- N° 12 MEDIUM BEIGE
- N° 12 TOWEL SMALL BEIGE
- N° 06 BATHMATS BEIGE
- N° 12 BATH SHEETS
- N° 02 BATHROBES KHAKI
- N° 04 BATHROBER BEIGE
- N° 04 BATHROBES PRUSSIAN BLUE
- N° 06 OPAL BLUE BATHMAT
- N° 12 WASH CLOTHES OPAL BLUE
- N° 12 HAND TOWEL OPAL BLUE
- N° 12 BATH SHEET OPAL BLUE

MAIN SALON ITEMS

- N° 02 MINOTTI SOFA 2 PERSONS
- N° 01 MINOTTI SOFA 3 PERSONS
- N° 01 MINOTTI ARMCHAIR
- N° 12 MINOTTI CHAIRS
- N° 10 HERMES CUSHIONS
- N° 01 MINOTTI CARPET
- N° 01 SMALL TEA TABLE
- N° 01 MINOTTI DINING TABLE

DECK DECORATIVE ITEMS

- N° 01 MINOTTI SMALL TABLE
- N° 03 BIG RATTAN BASKETS
- N° 03 SMALL RATTAN BASKETS
- N° 02 BONSAI BIG POTS
- N° 03 BONSAI SMALL POTS
- N° 15 ASHTRAYS EXTRA 3 COLORS

ENGINE DEPARTMENT INVENTORY

PUMPS - GIANNESCHI PUMPS & BLOWERS

- FIRE & BILGE PUMP - EMERGENCY DIESEL SERVICE KIT (IMPELLER, SEAL, SEEGER, O-RINGS, SEAL SPACER, SPLINE) 1 PCS
- MOTOPOMPA MACB 531 - EMERGENCY DIESEL SERVICE KIT (IMPELLER, SEAL, SEEGER, O-RINGS, SEAL SPACER, SPLINE) 1 PCS
- EL/POMPA ACB 331/B B 230/400V - DIESEL TRANSFER SERVICE KIT (IMPELLER, SEAL, SEEGER, O-RINGS, SEAL SPACER, SPLINE) 1 PCS
- EL/POMPA CP20 A1 G 24V - DIESEL PRIMING SERVICE KIT (IMPELLER, SEAL, SEEGER, O-RINGS, SEAL SPACER, SPLINE) 1 PCS
- GRUPPO 2 JET 518B - WATER DISTRIBUTION SERVICE KIT (IMPELLER, SEAL, SEEGER, O-RINGS, SEAL SPACER, SPLINE) 1 PCS
- EL/POMPA MVI60 230/400V GREY AND BLACK WATER SERVICE KIT (IMPELLER, SEAL, SEEGER, O-RINGS, SEAL SPACER, SPLINE) 1 PCS
- SPARE FRESH WATER PUMP FOR A/C
- SPARE SEA WATER PUMP FOR A/C
- SPARE SEA WATER PUMP FOR FRIDGES

MTU

- FUEL FILTER 2PCS
- OIL FILTER 2PCS
- FUEL PRIMARY FILTER 2PCS

KOHLER GENERATORS - 100 EFOZDJ - 99KW

- REBUILT KIT (PRIMARY FUEL FILTER, SECONDARY FUEL FILTER, OIL FILTER, IMPELLER, ANODES) 2 PCS
- AIR FILTER 2 PCS
- SPARE SEA WATER PUMP

STP SELMAR - BLUE SEA 12000 SPECIAL

- INTERNAL LEVEL SWITCH (MID, MED, MAX, OVERFLOW) 2PCS
- OVERFLOW LEVEL SWITCH (FOR EXTERNAL SEWAGE HOLDING TANK) 2PCS
- MINIMUM LEVEL SWITCH (FOR EXTERNAL SEWAGE HOLDING TANK, MAX LENGHT 1500MM) 2 PCS
- CAN 2OLT. DOSING CHEMICAL 2PCS

IDROMAR

FRESH WATER + WATER MAKER SYSTEMS + WATER SOFTENER

ELECTRICAL KIT

- TRANSFORMER 50VA 1 PCS
- FUSE KIT 10A
- FUSE KIT 10,3X38 10A (N° 3) 1 PCS
- FUSE KIT 2A
- FUSE KIT 5X20 2A (N° 5) 1 PCS
- FUSE KIT 4A
- FUSE KIT 5X20 4A (N° 5) 1 PCS

GENERAL PARTS

- 10MP25/50 FILTER N.1 26 PCS
- 10MP5/50FILTER N.2 26 PCS
- REGENERATION KIT (WATERMAKER) 2PCS
- CARTRIDGE FILTER 30 PCS
- IDROMAR STAINLESS STEEL FILTER CARBON FITLER 2 PCS
- WATER SOFTENER IDROFAST 9100 SALT BAG 25 KG 4 PCS
- UV LAMP 2PCS

FRIGOMAR

AIR CONDITIONING – FRIGOMAR 913

- ZINC 995 ANOD THREAD 1"8 12 PCS
- ROOM THERMOSTAT WITH POWER BOX 400W, DISPLAY 2 PCS
- ROOM THERMOSTATWITH POWER BOX 400W, DISPLAY 1 PCS

- CARD CAPACITORS FOR VARIABLE SPEED FAN COIL (MOUNTED ON FANCOIL) FOR EACH FAN COIL 4 PCS
- VENTILATOR FOR FAN COIL MOD. B1 1 PCS
- VENTILATOR FOR FAN COIL MOD. T1 - V - Z3 4 PCS

FRIDGE / FREEZER

- SOLEINOID VALVE 24 VDC 1/4 SAE 1 PCS

ICE MAKERS

- EXPANSION VALVE 1 PCS

OIL

- CAN LT.20 ARNICA 46 OIL (HYDRAULIC PACK FOR GANGWAYS, GARAGE DOOR) 2PCS
- CAN LT.20 RIMULA 10W30 1PCS
- CAN LT.20 10W40 14PCS
- CAN LT.20 SHELL OMALA 2PCS

MOTOMAR

GANGWAY

- BES M18MI-PSC80B BV05 INT. DI PROX SENSORS 1 PCS

SIDE LADDER

- BMF 0012 INT. DI PROX SENSORS 1 PCS
- BES M18MI-PSC80B BV05 INT. DI PROX SENSORS 1 PCS
- BES M18MI-PSC80B BV05 INT. DI PROX SENSORS 1 PCS

AFT BEACH PLATFORM

- BES M18MI-PSC80B BV05 INT. DI PROX SENSORS 1 PCS
- BMF 0012 INT. DI PROX SENSORS 5 PCS

TRAVEL

- BES M18MI-PSC80B BV05INT. DI PROX SENSORS 1 PCS
- BMF 0012 INT. DI PROX SENSORS 1 PCS

BALCONY

- BMF 0012 INT. DI PROX SENSORS 1 PCS

GENERIC SPARE

- LIGHT SWITCH D.22MM 1 PCS
- SCHLEGEL SPIA D.22MM 1 PCS
- LIGHT SELECTOR D.22 1 PCS
- EAO 84-5040.0020 NOT LIGHTED 2NC 1 PCS
- OMEGA Q8F1CXXG24E GREEN 1 PCS
- OMEGA Q8F1CXXR24E RED 1 PCS
- ABB MAIN SWITCH 1 PCS
- EAO (SERIE 82) LIGHT SWITCH D.19 1 PCS

BATTERY

- SPARE BATTERY 12V 2PCS

ELECTRICAL - AUTRONICA SMOKE DETECTOR

- CALL POINT TEST TOOL 4 PCS

PLANUS - TOILET

- PW.065.00 SOLENOID VALVE 230V 1 PCS
- PW.030.00 TRANSFORMER 230-12V 1 PCS
- PW.015.00 WALL SWITCH STANDARD 2P 1 PCS
- PW.034.00 DISCHARGE PUMP 230V AC 1 PCS
- PW.007.01 HOSE IMMISION WATER 1 PCS
- PW.005.00 DISCHARGE HOSE 1 PCS
- PRO LIFT MONO 230V 2 PCS
- PW.003.00 HOSE PUMP TOILET 1 PCS

POOL

- PW.065.00 SOLENOID VALVE 230V 1 PCS
- PW.030.00 1KG MULTITABLET KIT 2PCS

- PVC FITTINGS KIT (FOR POSSIBLE SYSTEM REPAIR)
- PVC GLUE
- REPLACEMENT FILTER CARTRIDGES IN STAINLESS STEEL 21 PCS
- MAGNESIUM ANODE 3 PCS

TOOLS

- TOOLS DRAWER MOBILE ROLLER 740X445X955 WITH 6 DRAWERS
- V-MAXX GOGGLE
- EARPHONES BILSOM 303L (NOT 3M)
- OFFICE CHAIR FOR ENGINE ROOM
- SET 8PZ ALLENKEY LONG BALL END
- N° 06 FLAT SCREWDRIVERS BIG BETA
- N° 06 FLAT SCREWDRIVERS SMALL BETA
- N° 04 CROSS SCREWDRIVERS BETA
- N° 01 SET FLAT SPANNERS 8-24MM BETA
- PLIERS FOR SUPPLY BETA
- CRIMPING PLIERS FOR POWER SUPPLY WITH SET OF INSERT N°1
- SMALL SET 1/4 32 PIECES
- COMBINATION PLIERS SET OF 3FLAT PLIERS 125MM
- FLAT PLIERS 200MM BETA
- BIT-SET 32PZ COLOR P.INS.+PH/PZ/E/TG/TX/TXH
- BETA MULTIGRIP PLIERS 190
- BETA 1082BM 160 WIRE CUTTING PLIERS LARGE 160
- BETA 1082 WIRE CUTTING PLIERS SMALL 140
- MULTIMETER FLUKE 179 SERVICE STANDARD INSTRUMENT
- IREGA ADJUSTABLE WRENCH LITTLE 77-12 MM.300
- IREGA ADJUSTABLE WRENCH BIG 77 8MM.200
- BETA TECHNICAL FABRIC TOOL BAG C 10S
- BETA 1390 35 PLASTI HAMMER 35
- BETA 1370 WOOD HAMMER 300GR
- BETA 1370 WOOD HAMMER 800GR

- BETA 1491 WRENCH FOR OIL FILTERS CHANGE
- BETA 1128BM SCISSORS
- LEATHERMAN SIDEKICK
- LED LENSER RECHARGEABLE MH7 GREY WINDOW BOXBETA WRENCHING BAR 450MM 965
- BETA BIG FAT WRENCHING BAR 800MM.
- BETA 1712E/1 FLESSIBILI MAGNETICI EASY KG 0,5
- DEWALT ANGLE GRINDER 800W 220V 115MM
- BETA IMPACT WRENCH GUN 1927XM/K5 WITH SOCKETS 18/22/27/34
- BETA AIR HOSE 10 MT.
- DIGITAL CALLIPER 3 FUNCTION L.150
- MANUAL CALLIPER MM.150X0.05
- KMT-8A MINI TERM RAGGI INFRAREDI 138.PHG600-3
- MACHINIST VISE BIG ONE 100 MM STANLEY
- HEAT GUN PHG 600-3
- BETA BEARING PULLER SET 1545/C5M
- BIG SET BUSSOLE 23 PZ + ACCESSORI 1/2" VAL.METALLO
- BETA 415CO/SP19A PUNTE RET HSS COBALTO 5% SR19PZ
- PIPE WRENCH SMALL 250 BETA
- PIPE WRENCH BIG 600 BETA
- BETA 1726 HACKSAW WITH BLADE TENSIONINGCHAIN BLOCK 1 TON
- BETA SPANNERS FROM 6 TO 32MM 13 PIECES
- KACKSAW CLASSIC 328H/16
- BETA METRIC THREAD TOOLS 446/C30
- GREASE GUN WITH HOSE FOR CARTRIDGE DA GR.400
- BATTERY ANALIZER BETA 1498/12-24
- PNEUMATIC WIRE BRUSH
- EXTRACTED DRILL BITS
- ACCU DRILL BOSCH PROFESSIONAL
- DRILLING CROWNS FOR WOOD SET
- BRENER
- HEAT SILICONE GUN

NAVIGATION





EXTERIORS
BEACH CLUB





EXTERIORS
MAIN DECK AFT





EXTERIORS
MAIN DECK FWD



EXTERIORS
UPPER DECK



EXTERIORS
SUN DECK





INTERIORS
MAIN DECK SALON









MAIN DECK
OWNER SUITE





UPPER DECK
SALON







LOWER DECK
VIP CABIN



LOWER DECK
GUEST CABIN



PANTRY

