

# OCEAN VIEW

MAJESTY 100, HULL #11  
FOR SALE







Gaining global acclaim since its unveiling, the Majesty 100 is a testament to luxury, characterized by a unique enclosed sky-lounge and a sophisticated yet efficient propulsion system. This vessel seamlessly propels Majesty Yachts owners into the realm of superyacht status, offering lavish interiors and expansive lounging areas. Its timeless exterior styling, coupled with uncompromising naval engineering, is complemented by exquisite interior craftsmanship, making the Majesty 100 a pinnacle of maritime elegance.

With a master cabin on the main deck and accommodation for 12 guests, this yacht is a fusion of opulence and functionality. The sky lounge deck, adorned with folding balconies, provides an exceptional vantage point for indulging in the beauty of the seascape.

**M/Y OCEANVIEW**





**ASKING PRICE**

**€6,000,000 VAT not Paid**

---

**M/Y OCEANVIEW**



## SPECIFICATIONS

Builder: Majesty Yachts	Length: 33.04 m (108'4")
Year Built: 2022	Draft: 1.65 m (5')
Flag: Cayman Islands	Beam: 6.90 m (22'6")
Engine: 2 x MAN 1900 HP <small>1,300 hours*</small>	Generator: 2 x KOHLER 50 KW <small>3,360 hours*</small>
Max speed: 19 knots	Cruise speed: 14 knots
Guest cruising: 12	Gross Tonnage: 199 GT
Number of cabins: 5	Crew: Captain + 5
Fuel Tank: 15,000 L	Water Tank: 3,000 L
Stabilizers: TRAC Fin Stabilizers	Cabin detail: 1 Master, 2 Double, 2 Twin convertible with pullman beds



\*Engine & Generator hours as of June 2024

# M/Y OCEANVIEW





## TOYS & EQUIPMENT

- 1 x Seadoo - 3 seats
- 2 x Seabobs
- 2 x Paddleboards
- 2 x Eovolt Electric Bikes
- 1 x Inflatable Slide
- 1 x Inflatable Swimming Pool

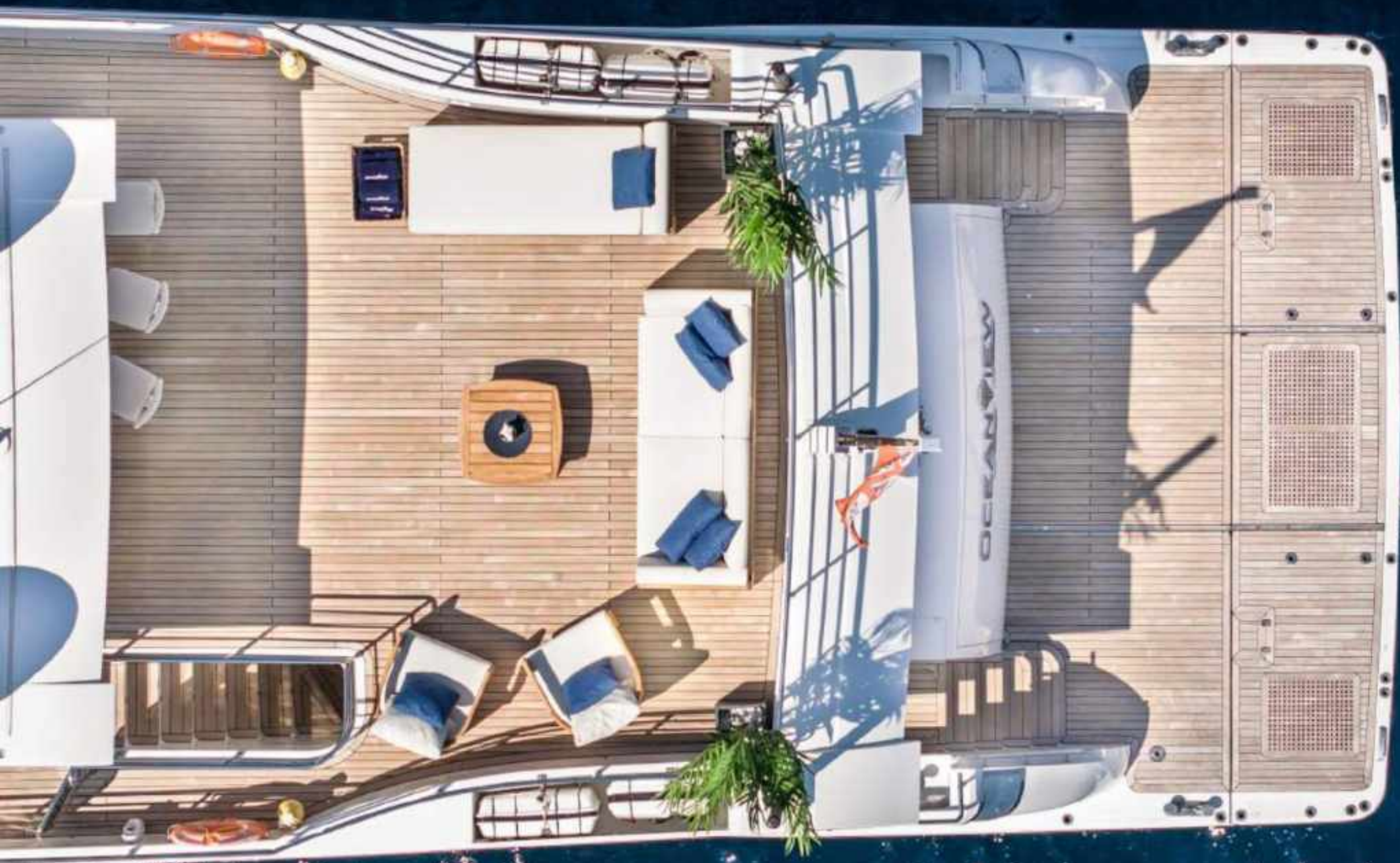
## KEY FEATURES

1. Zero Speed Stabilizer
2. Master Cabin On Main Deck
3. Accommodates 12 Guests Sleeping
4. Sky Lounge Deck & Folding Balconies

**M/Y OCEANVIEW**



Aft Deck Dining Area



M/Y OCEANVIEW



Aft Deck Dining Area



M/Y OCEANVIEW



Aft Deck Dining Area



M/Y OCEANVIEW



Aft Deck Dining Area



M/Y OCEANVIEW



Aft Deck



OCEANVIEW

M/Y OCEANVIEW



Main Salon



M/Y OCEANVIEW



Main Salon



M/Y OCEANVIEW



Main Salon & Dining Area



**M/Y OCEANVIEW**



Master Cabin



M/Y OCEANVIEW



Master Cabin



M/Y OCEANVIEW



Master Cabin



MY OCEANVIEW





Master Cabin Ensuite

M/Y OCEANVIEW



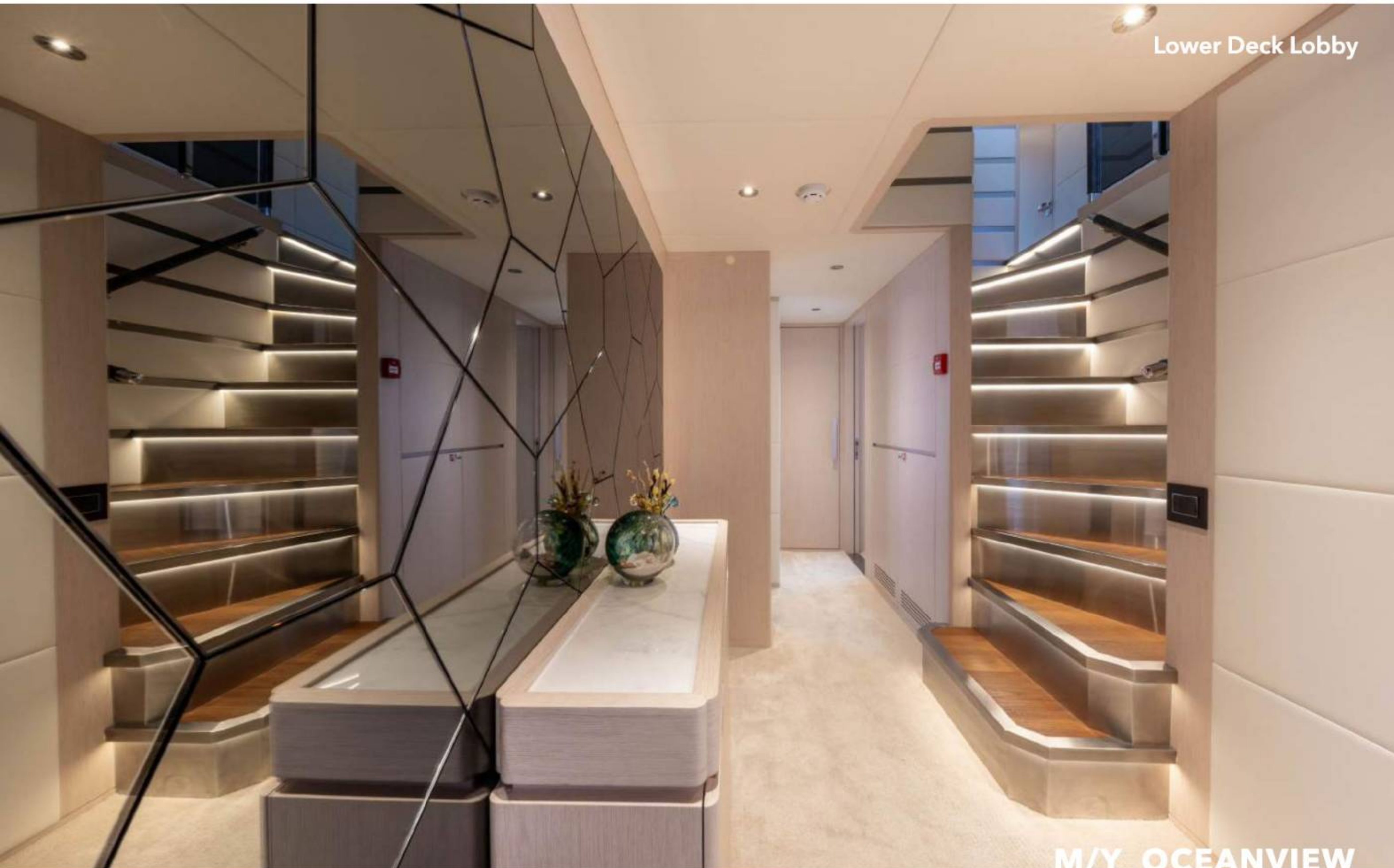
Master Cabin Ensuite



M/Y OCEANVIEW



Lower Deck Lobby



M/Y OCEANVIEW



Lower Deck Lobby



M/Y OCEANVIEW



VIP Cabin



M/Y OCEANVIEW



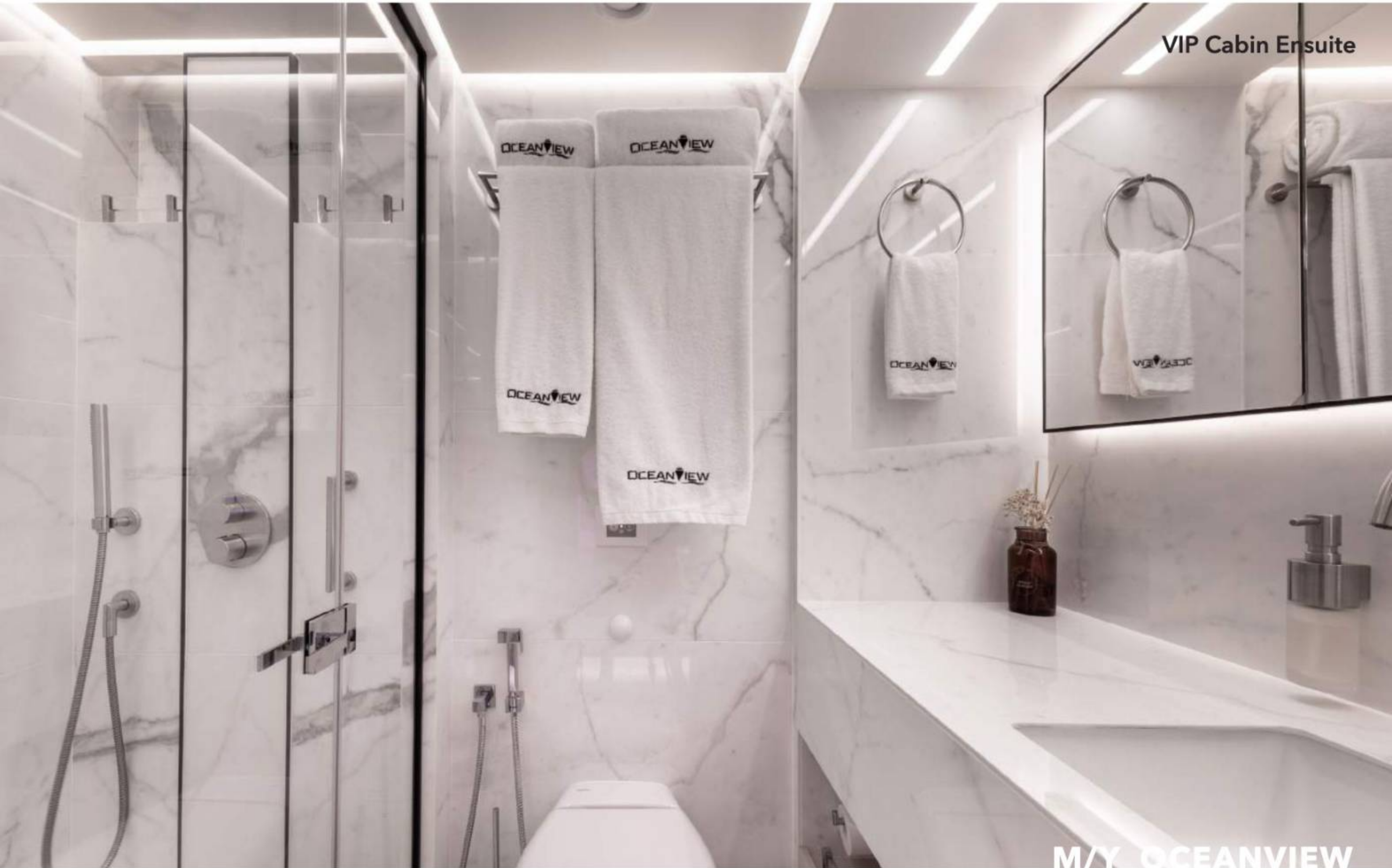
VIP Cabin



M/Y OCEANVIEW



VIP Cabin Ensuite



M/Y OCEANVIEW



VIP Cabin



**M/Y OCEANVIEW**



Twin Cabin



M/Y OCEANVIEW





Twin Cabin

M/Y OCEANVIEW





Twin Cabin Ensuite

M/Y OCEANVIEW



Sky Lounge



**M/Y OCEANVIEW**



Flybridge



M/Y OCEANVIEW



Flybridge



M/Y OCEANVIEW



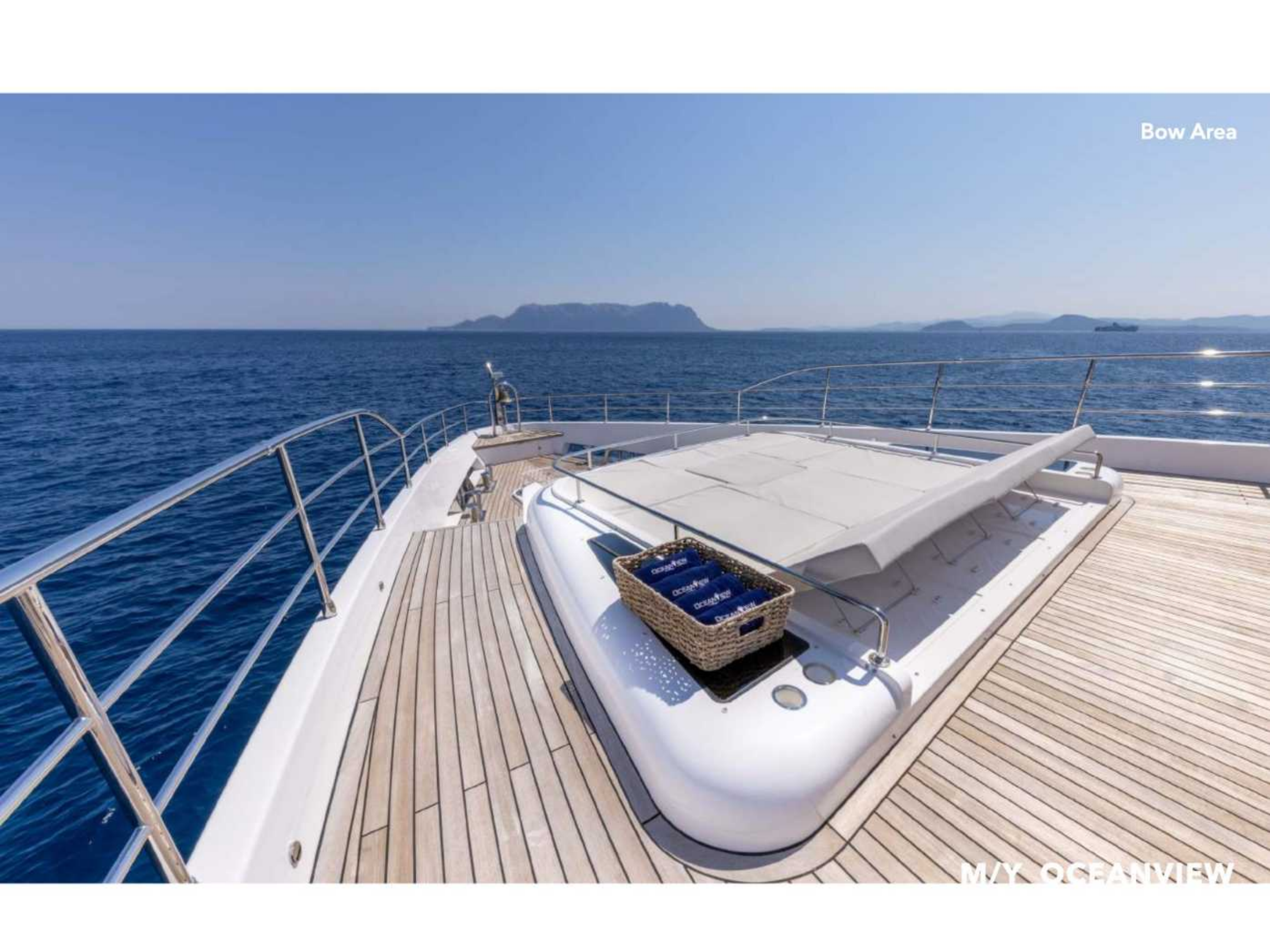
Bow Area



M/Y OCEANVIEW



Bow Area



M/Y OCEANVIEW



Bow Area



M/Y OCEANVIEW



Bow Area



M/Y OCEANVIEW



Bow Area



**M/Y OCEANVIEW**



Wheelhouse



M/Y OCEANVIEW



Galley



M/Y OCEANVIEW



Galley



M/Y OCEANVIEW



Engine Room



M/Y OCEANVIEW



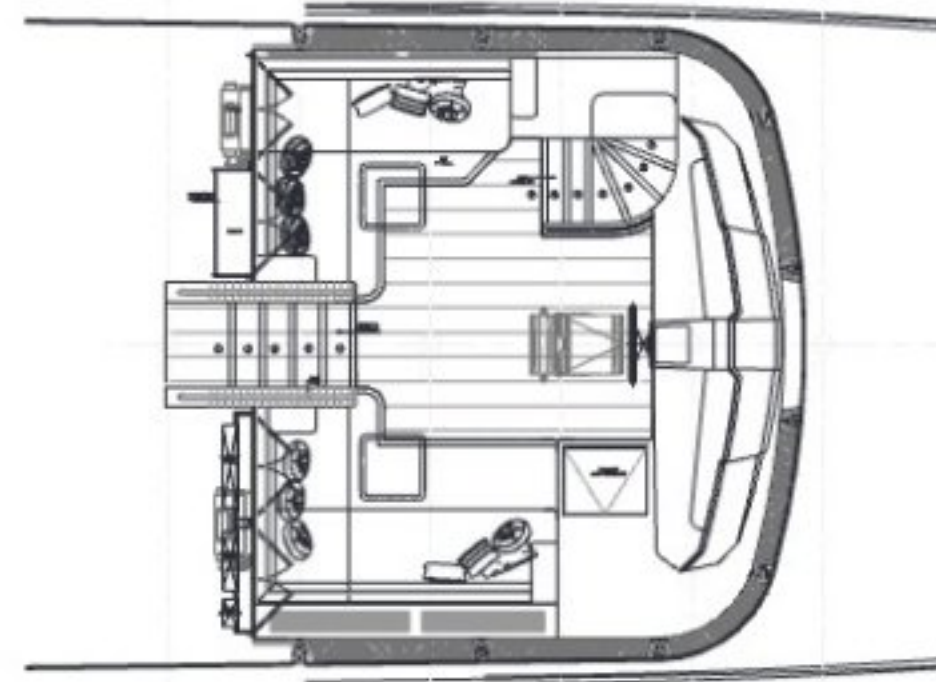
Engine Room



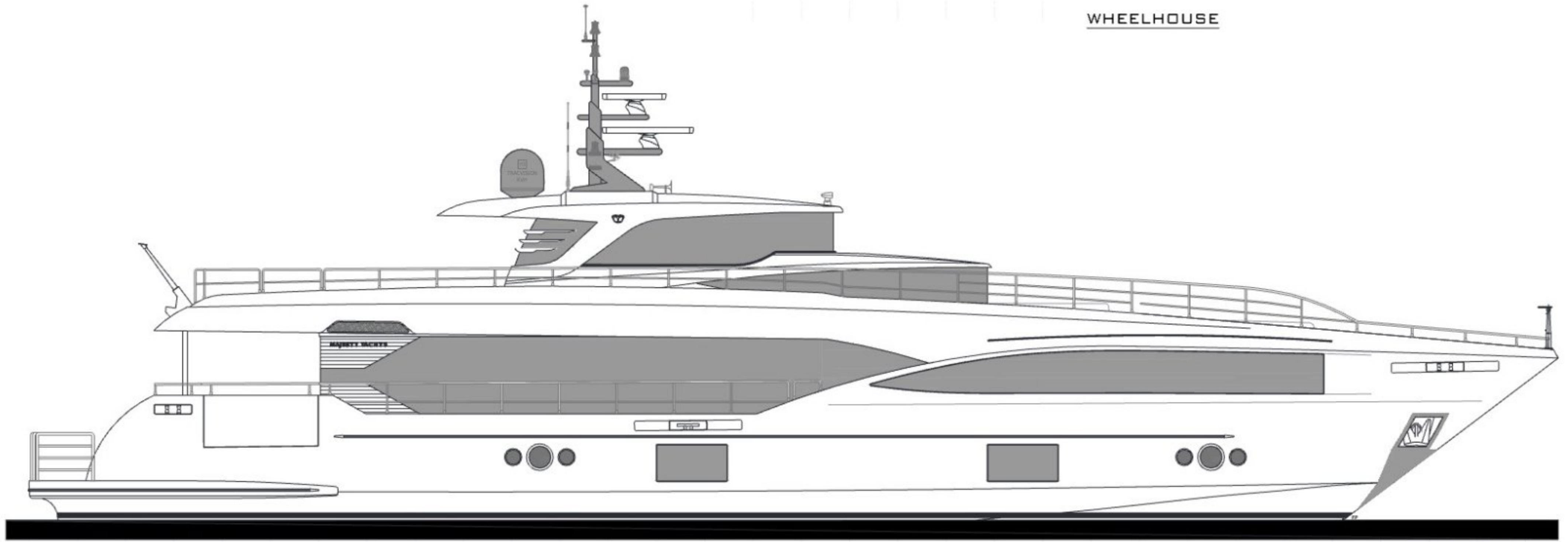
**M/Y OCEANVIEW**



# General Arrangement

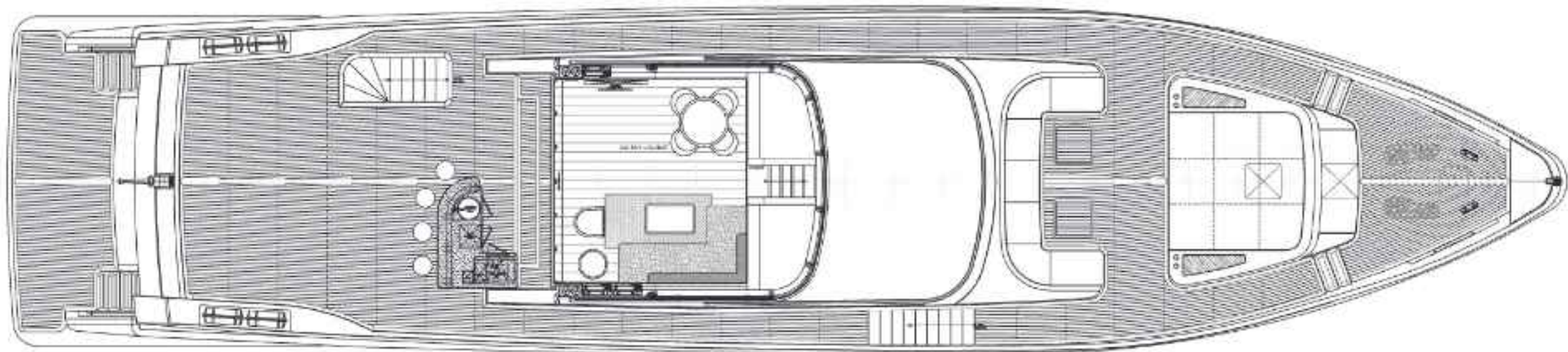


WHEELHOUSE

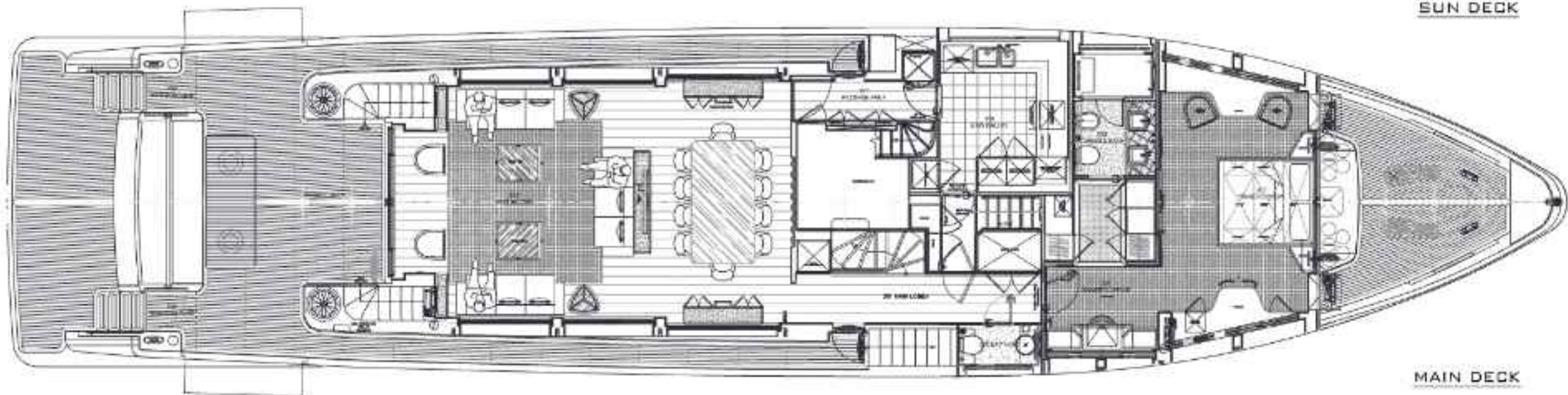


PROFILE

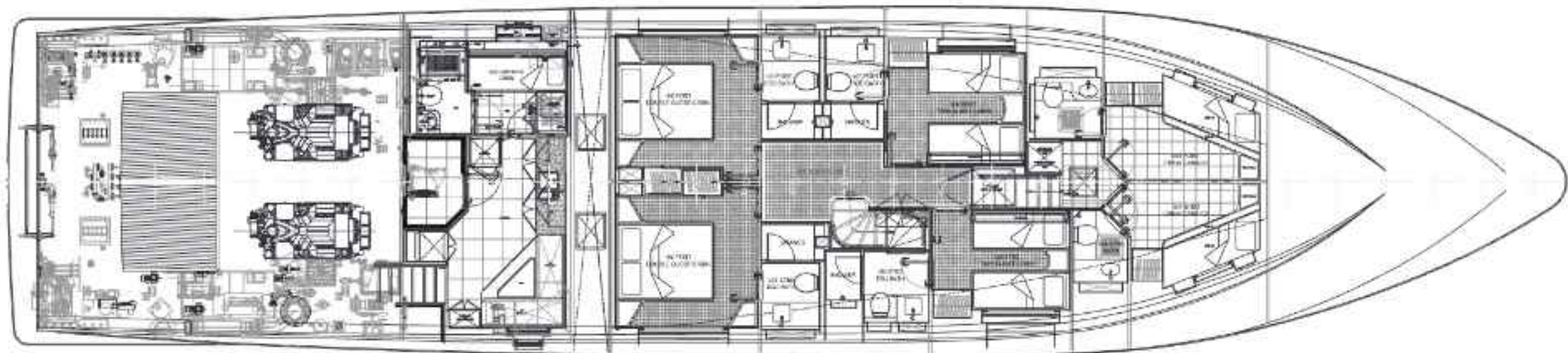




SUN DECK



MAIN DECK



LOWER DECK



## OPTIONS LIST

- Powered with Twin MAN 1900HP Engines
- RINA Commercial MCA / LY3
- TRAC Digital Fin Stabilizer System TRAC 370
- Hydraulic Passarella
- Commercial Grade Oven 90cm, Dishwasher and Fan Extractor
- Intercom Telephone System
- Thuraya Satellite Phone
- Sewage Treatment Plant (M100)
- Shore Power Converter 50Kw
- STERN THRUSTER M100
- European Garmin Maps
- Safe In One Of The Double Guest Cabins (PORT SIDE)
- Tenderlift 1200kg Net Lifting Capacity - H+B Technics 90.999.0036
- Swim Platform Portable Shower (11009-L-IR)
- Twin Cabins Convertible To Double Sliding Beds On One Side
- Sky Lounge - Parquet Matching Inside
- Privacy Screen For AFT Cockpit Area - Motorized (Sunway)
- Mooring Bits To Add Stopper Ring Or Hook - 2Pcs
- Fresh Water Inlet Direct To The Tank Boarding From The Dock
- Swim Platform SS Ladder
- Inox Or SS Connector For Deck Wash Hose At Garage Area
- Inox Or SS Connector For Deck Wash Hose At Main Deck
- Inox Or SS Connector For Deck Wash Hose At FWD Ancor Area
- Anchor Chain Area Huge Space To Maximize As Storage Access
- Anchor Chain Wash Aside From Fresh Water Connection
- Mooring Bits To Add Stopper Ring/hook+2 Extra FWD Anch Area
- Two SS Hawser Pipes + SS Lining In The Grp Freeing Port
- All Compartment Require Grill Underneath To Eliminate Moistur
- Inox Or SS Connector For Deck Wash Hose - Flybridge
- Move Switch&FireAlarmSwitch Close To Door For PlatesStorage
- Ball Valves In & Out For Pump To Remove Pumos Easily
- STP For Grey & Black Water System (Line Connection Only)
- Desalter Duplex 2 X 130l/h (Idromar)
- Water Softener And UV Lamp
- Repeater Dashboard Instrumentation (main Heim)
- Additional (1) Navigation Monitoring Display
- Shelves, Foldable Table, Mini Coffee Machine & Basin @ Port Passage
- Bar Stool Back Support (Same As MAJ140) - 4Pcs
- Std Bar Counter Extension (counter Top Toward The Door)
- Grills In All Wet Areas Compartments To Stop Water Ponding
- Electric Door For The Sky Lounge
- Move Dryer/Washer- Next To Main Galley To Crew Quarter
- STBD Passage For The Crew Like 100-007 Hidden Door Way
- Sliding Door Between Galley & Port Passage Way Only - 1No
- Freezer On The Main Deck (MIELE) FNS 37402i)
- Crew Cabin Area - Ironing Board - 1pc
- Hinged Hatches In The Bow Area
- AFT Hawser Pipe Full Open (Port & Stbd)
- Intetnational Code Flag (Flag Storage)
- Storage In The Saloon Sofa Lounge
- Sliding Door Dinning To Galley (Port Side)
- Upgrade MSB For Seamless Connectioction When Power Failure
- Camera Monitoring System 360 Deg + Zoom (Hikvision)
- CCTV Access Via WAN
- Single Seater Armchair With Teak (1 Pc)
- Three-Seater Sofa With Teak (1 Pc)
- Chaise Lounge Sofa (1Pc)
- Electric Sockets (4Pcs) & Internet Connection



# OPTIONS LIST

- Wooden Cabinet W/Marble Countertop At Guest Lobby(Credenza)
- Additional Wooden Storage For Wine Glass (port&stbd)
- Additional Storage At Main Lobby
- Std Table Extension(rectangle Shape) At Crew Lounge
- Mooring Bits At Swim Platform 2 Pcs (Port & Stbd)
- Extra Refrigerator At Sky Lounge Bar (DW 100 RF V12/24)-1Pc
- Electric Patio Door At Main Deck
- Relocation Of TV And Upgrade To 85
- SS Gate At Fly-Bridge Mid-ship (Exterior)
- SS Gate At Fly-Bridge Staircase (Exterior)
- Additional Wired Engine Throttle And Thruster Controls
- Awning Poles Base Installation (Item Supply By Customer)
- Prop-speed (Propellers,Shafts,Bow Thrusters,Rudders)
- Add 220v Plugs In The Crew Area (1 Pc only Possible)
- Locker At Entrance Of Gunnel Passage To The Crew Area
- Crew Mess Table Extendable
- Day Head Toilet, Add Shelves Below The Sink
- Exterior Locker Port Side, Add 220V Outlet
- Exterior Locker Port Side, Add Shelves
- Garage Additional 2 X 220V Outlet
- Preparation For Dishwasher Glass Pantry (evacuation + electricity)
- Additional Foldable Table In The Galley
- Cooker Hood Additional Partition (door)
- Life Jacket Storage Below Window
- Life Jacket Storage At Locket Near Wardrobe
- Alternative Life Jacket Storage For Master Cabin
- Pop Up Cleats At Swim Platform (2Pcs)



# VI/Y OCEANVIEW



*\*Information provided is the most accurate possible but not contractual*