



ALPHA ZULU

Length: 34.53 metres (113' 3")

Beam: 7.28 metres (23' 11")

Draft: 2.4 metres (7' 10")

Number of Guests: 8

Number of Crew: 6

Built: 2013

Refit: 2017

Builder: Sunseeker

Flag: French

Hull Construction: GRP

Hull Configuration: Semi displacement

Air conditioning, Deck Jacuzzi, Stabilisers at anchor, Stabilisers underway, WiFi connection on board



Main Salon



Main Salon





Diner Table





Master Cabin Ensuite



Main Salon



Main Salon



Master Cabin



Twin Cabin Ensuite



Master Cabin



Aft Deck tables



Master Cabin

SPECIFICATIONS

ACCOMMODATION

Number of Guests: 8

Number of Cabins: 5

Cabin Configuration: 3 Double, 1 Twin, 1 Convertible

Bed Configuration: 1 Pullman, 1 King, 2 Queen, 1 Double, 2 Single

EQUIPMENT

Cruising Speed: 15 knots

Fuel Consumption: 550 Litres/Hr

WATERSPORTS

Tenders + Toys: Tender Novurania 5m

Wake Board

Jet Ski seadoo RXB

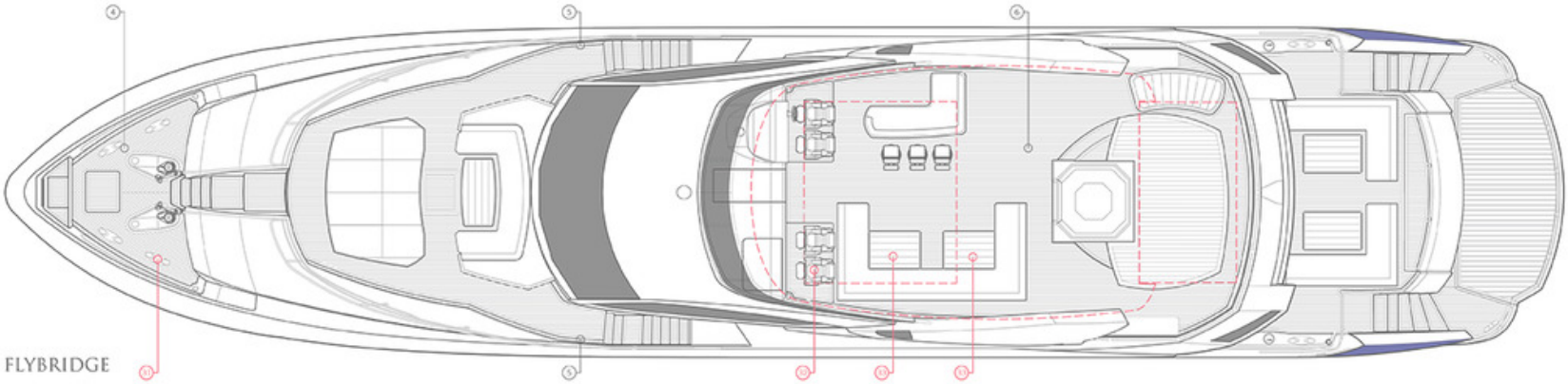
Seabob F5 RS

Paddle Board

Donuts

Snorkling equipment

LAYOUT



Disclaimer

This document is not contractual. All specifications are given in good faith and offered for informational purposes only. The publisher and company do not warrant or assume any legal liability or responsibility for the accuracy, completeness, or usefulness of any information and/or images displayed. Yacht inventory, specifications and charter prices are subject to change without prior notice. None of the text and/or images used in this brochure may be reproduced without written consent from the publisher.