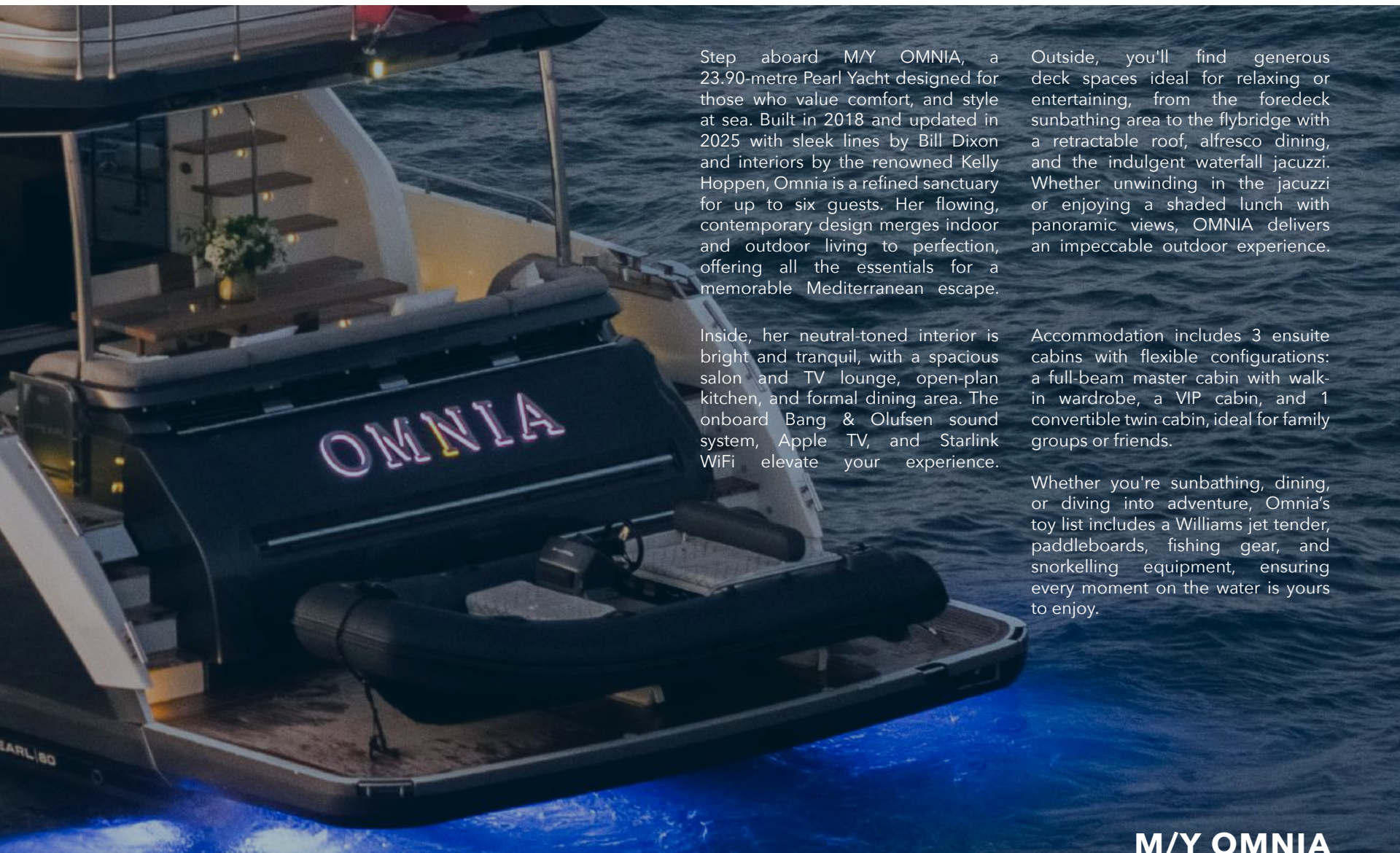


# OMNIA

FOR CHARTER







Step aboard M/Y OMNIA, a 23.90-metre Pearl Yacht designed for those who value comfort, and style at sea. Built in 2018 and updated in 2025 with sleek lines by Bill Dixon and interiors by the renowned Kelly Hoppen, Omnia is a refined sanctuary for up to six guests. Her flowing, contemporary design merges indoor and outdoor living to perfection, offering all the essentials for a memorable Mediterranean escape.

Inside, her neutral-toned interior is bright and tranquil, with a spacious salon and TV lounge, open-plan kitchen, and formal dining area. The onboard Bang & Olufsen sound system, Apple TV, and Starlink WiFi elevate your experience.

Outside, you'll find generous deck spaces ideal for relaxing or entertaining, from the foredeck sunbathing area to the flybridge with a retractable roof, alfresco dining, and the indulgent waterfall jacuzzi. Whether unwinding in the jacuzzi or enjoying a shaded lunch with panoramic views, OMNIA delivers an impeccable outdoor experience.

Accommodation includes 3 ensuite cabins with flexible configurations: a full-beam master cabin with walk-in wardrobe, a VIP cabin, and 1 convertible twin cabin, ideal for family groups or friends.

Whether you're sunbathing, dining, or diving into adventure, Omnia's toy list includes a Williams jet tender, paddleboards, fishing gear, and snorkelling equipment, ensuring every moment on the water is yours to enjoy.

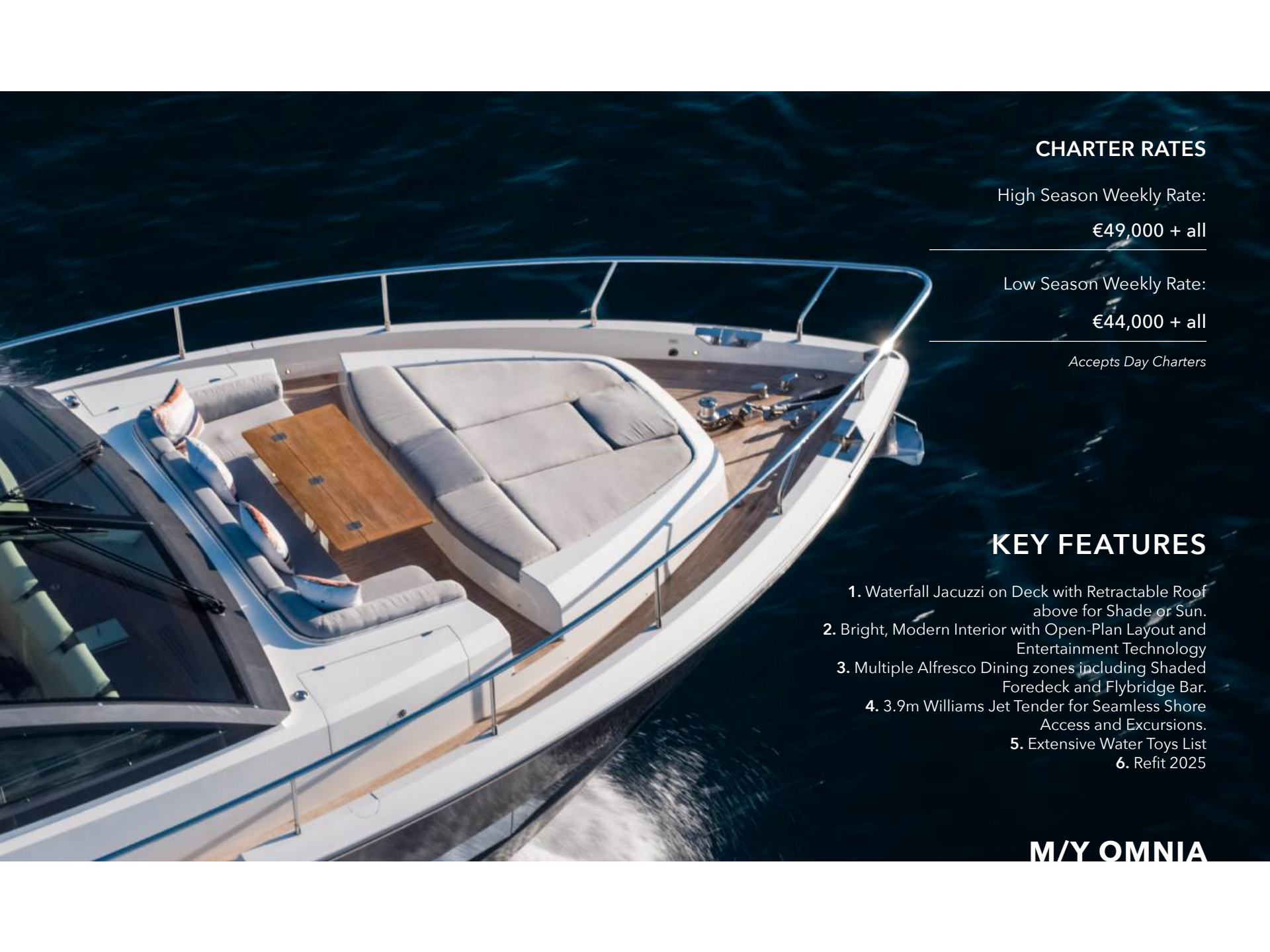
**M/Y OMNIA**

## SPECIFICATIONS

Builder:	Length:
Pearl Yachts	23.90 m (80')
Year Built:	Draft:
2018 (Refit 2025)	1.60 m (5')
Stabilizer:	Beam:
Seakeeper Gyroscopic	6.00 m (19')
Max speed:	Cruise speed:
34 knots	12 knots
Guest cruising:	Guest sleeping:
12	6
Number of cabins:	Crew:
3 (+ 1 captain cabin)	3
Cabin detail:	Engine:
1 Master, 1 VIP, 1 Twin convertible	2 x MAN V12/1150 H Kohler 27 kW 2000 HP

M/Y OMNIA





## CHARTER RATES

High Season Weekly Rate:

€49,000 + all

Low Season Weekly Rate:

€44,000 + all

*Accepts Day Charters*

## KEY FEATURES

1. Waterfall Jacuzzi on Deck with Retractable Roof above for Shade or Sun.
2. Bright, Modern Interior with Open-Plan Layout and Entertainment Technology
3. Multiple Alfresco Dining zones including Shaded Foredeck and Flybridge Bar.
4. 3.9m Williams Jet Tender for Seamless Shore Access and Excursions.
5. Extensive Water Toys List
6. Refit 2025

**M/Y OMNIA**



## TOYS & EQUIPMENT

- 395 Williams Jet Tender
- Paddleboards
- Inflatable Water Toys
- Kneeboards
- Wakeboards & Waterskis
- Towing Buoy
- Snorkelling Equipment
- Fishing Equipment
- Gym Equipment (Weights & Bands)

M/Y OMNIA





M/Y OMNIA



Aft Deck Seating



M/Y OMNIA

Aft Deck Seating



M/Y OMNIA



Bow Area Seating



**M/Y OMNIA**



Bow Area Seating



**M/Y OMNIA**



Flybridge



M/Y OMNIA



Flybridge



M/Y OMNIA

A high-quality photograph of the deck of a motor yacht. In the foreground, a large white rectangular jacuzzi with a wooden deck surround is visible. To its left is a plush blue and white cushioned sofa. The deck is finished with teak planking and has stainless steel railings. In the background, there's a black overhead structure with a Spanish flag and various nautical equipment. The yacht is on a calm blue sea under a clear sky.

Flybridge Jacuzzi

M/Y OMNIA

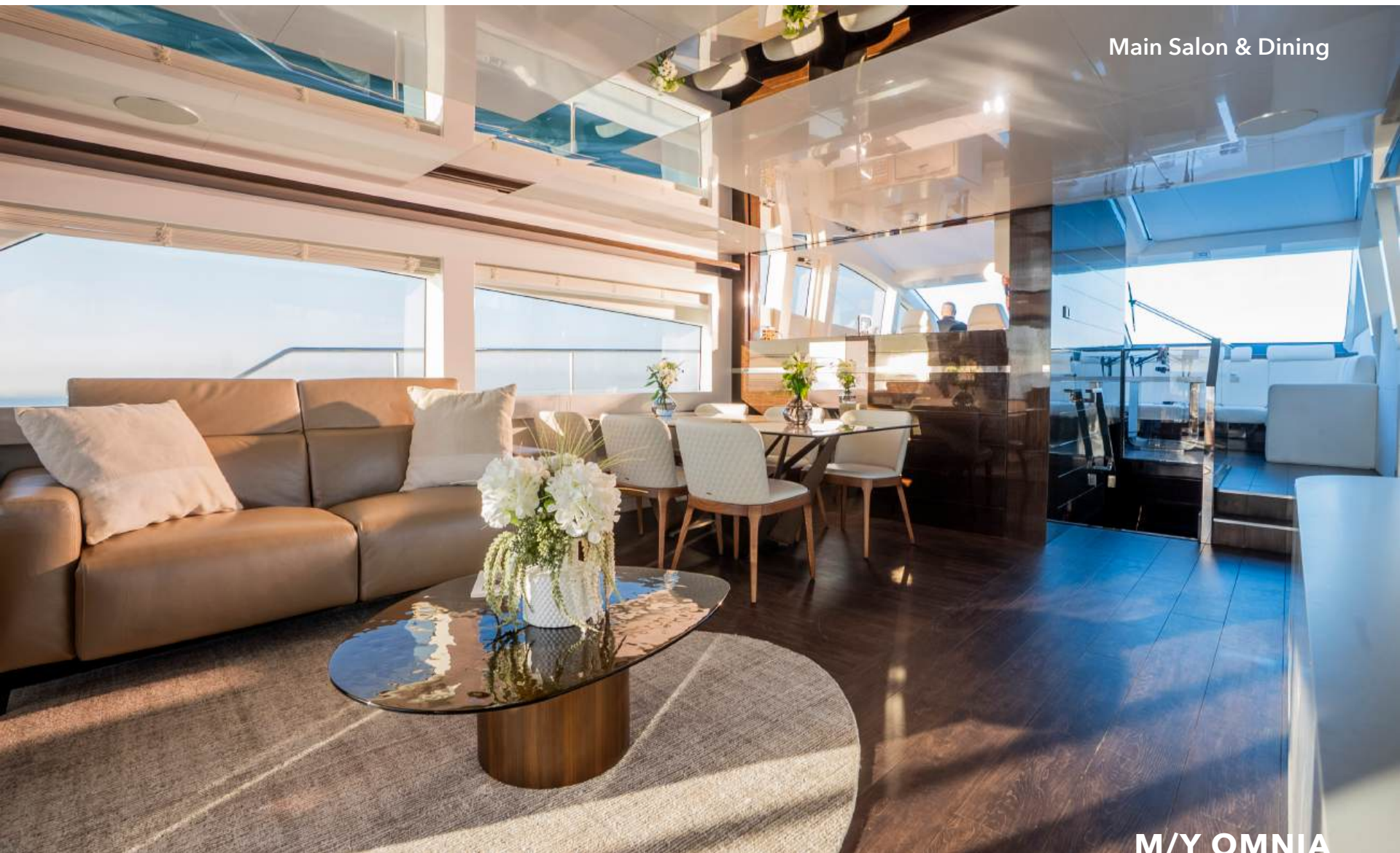




Main Salon

M/Y OMNIA



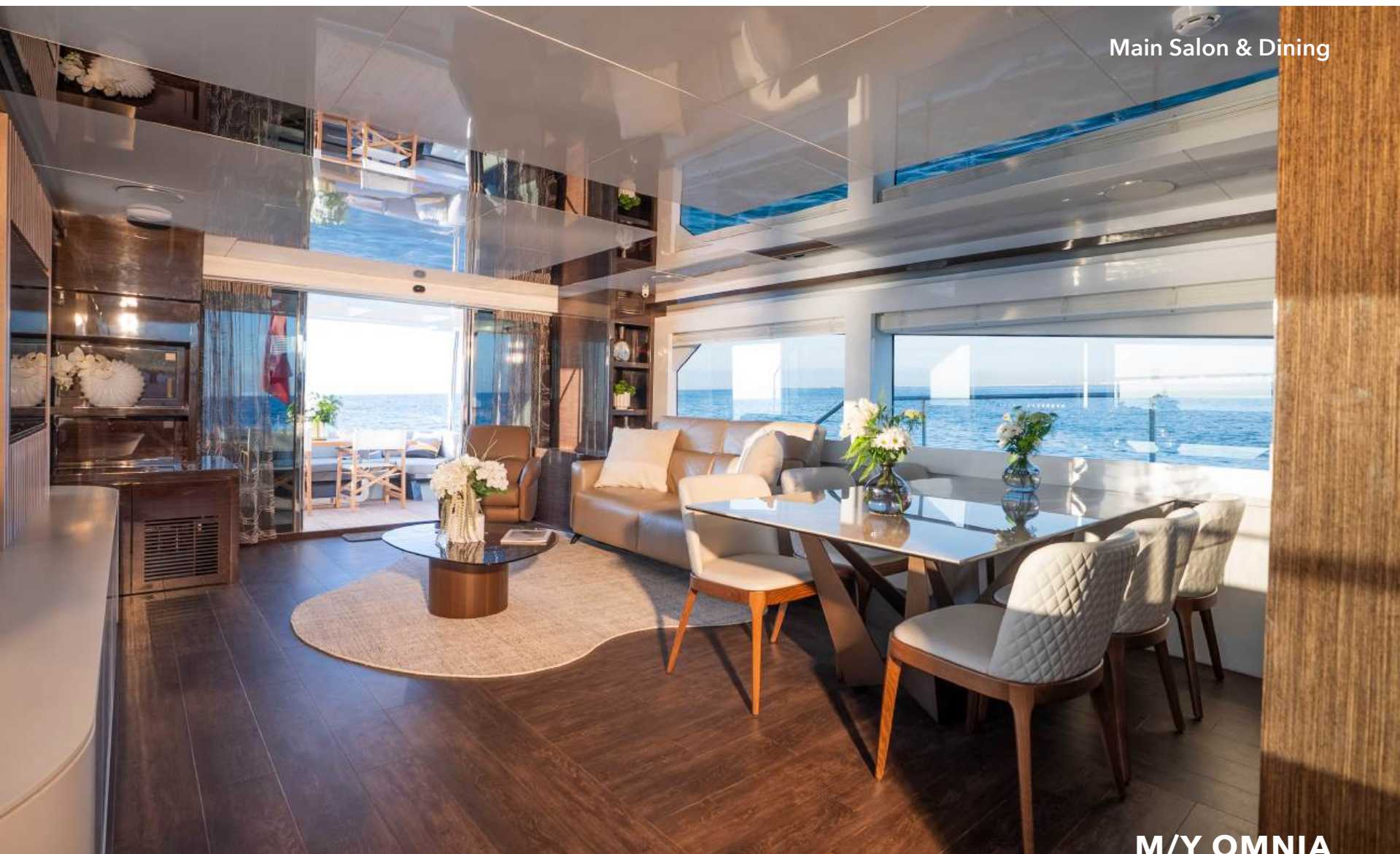


Main Salon & Dining

M/Y OMNIA



Main Salon & Dining



M/Y OMNIA



Galley

M/Y OMNIA





Galley

M/Y OMNIA

Master Cabin



M/Y OMNIA





Master Cabin

M/Y OMNIA

Master Cabin



M/Y OMNIA





Master Cabin Ensuite

M/Y OMNIA

Master Cabin Ensuite



M/Y OMNIA



VIP Cabin



M/Y OMNIA

VIP Cabin



M/Y OMNIA





VIP Cabin Ensuite

M/Y OMNIA



Corridor

M/Y OMNIA





Twin Cabin Ensuite

M/Y OMNIA

Twin Cabin



**M/Y OMNIA**



Bridge



M/Y OMNIA

Bridge Seating



**M/Y OMNIA**



# MY OMNIA

