



BLISS

Length: 44.17 metres (144' 11")

Beam: 9.00 metres (29' 6")

Draft: 2.5 metres (8' 2")

Number of Guests: 12

Number of Crew: 9

Built: 2007

Refit: 2019

Builder: Heesen

Naval Architect: Omega Architects

Flag: Maltese

Hull Construction: Aluminium

Air conditioning, Deck Jacuzzi, Stabilisers at anchor, Stabilisers underway, WiFi connection on board

Walkthrough video <https://youtu.be/iTICutOm-iQ>

Built by Heesen Yachts in 2007, Bliss is the definition of a high quality Dutch yacht that combines slick performance and striking sporty lines. With impressive performance credentials, she is able to reach speeds of up to 25 knots, while her modern stabilisation system and bow thrusters ensure high levels of comfort when on board.

Bliss boasts a contemporary and stylish interior by Icelandic designer Ingibjorg St. Palmadottir with a palette of black,

white, silver and dark lavender. Generous accommodation for 12 guests in five cabins make her ideal for charter groups, with guest suites including the full beam master cabin with a private his and hers office space just aft of the master cabin. Four additional cabins include three doubles and a bunk room that is ideal for groups with children. Each guest cabin has its own unique design and style, ensuring guests can enjoy a welcoming and relaxing personal space to retreat to when on board. The upper lounge on the sky deck can also be converted into an additional cabin offering extra flexibility for larger charter groups.

An elegant main salon forms the heart of the yacht, and is perfect for entertaining, informal gatherings or simply relaxing. A large seating area and entertainment system is completed by a formal dining space, with circular table and leather seating, for enjoying sumptuous meals prepared by Bliss' talented chef. The yacht's second central guest space, the upper lounge, is home to a beautiful bar and comfortable seating area. Guest spaces are linked by an impressive lit mirrored spiral staircase that is one of the yacht's most beautiful design features.

Outdoor spaces are extensive, and include a large aft deck with exterior dining and seating, sunpads and a sunken seating area forward, and an upper deck with a Jacuzzi and sauna. Guests will be able to relax in style while enjoying wide

KEY FEATURES

- 1** Total refit in 2019
- 2** Portuguese style seating in the bow
- 3** Contemporary and stylish interior
- 4** Zero speed stabilizers
- 5** Upper salon can be converted as an extra guest cabin



Profile



Profile



Main Deck AFT



Main Deck



Main Deck AFT



Main Salon



Main Salon



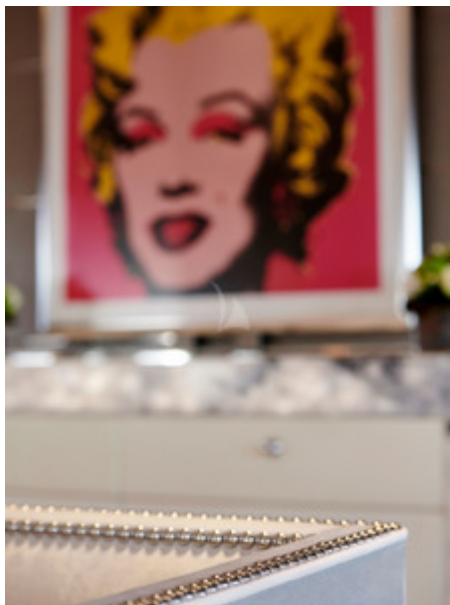
Main Salon



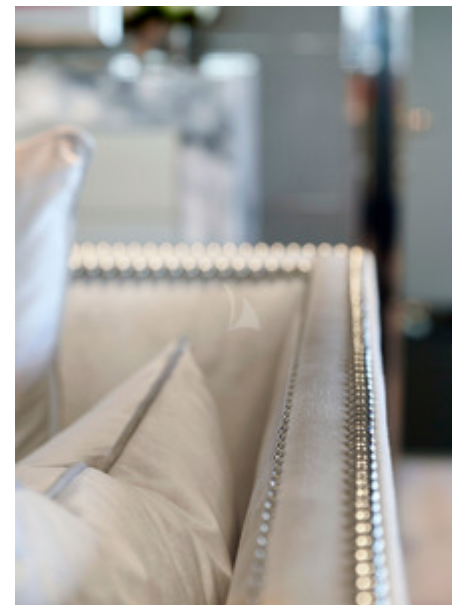
Main Salon dining



Details



Details



Details



Details



Main Salon



Master Cabin



Master Cabin



Master Cabin



Master Cabin



Master Cabin



Staircase Details



Spiral Staircase



DBL Cabin



DBL Cabin



DBL Cabin



TWIN Cabin



DBL Cabin



Upper Salon Bar



Upper Salon Bar



Upper Salon Bar



Upper Salon Bar



Details



Upper Salon



Upper Salon



Upper Salon



Upper Salon/ Convertible in Cabin



Upper Salon/ Convertible in Cabin



Upper Deck dining



Sundeck



Sundeck



Sundeck



Sundeck



Sundeck



Sundeck



Sundeck



Jacuzzi



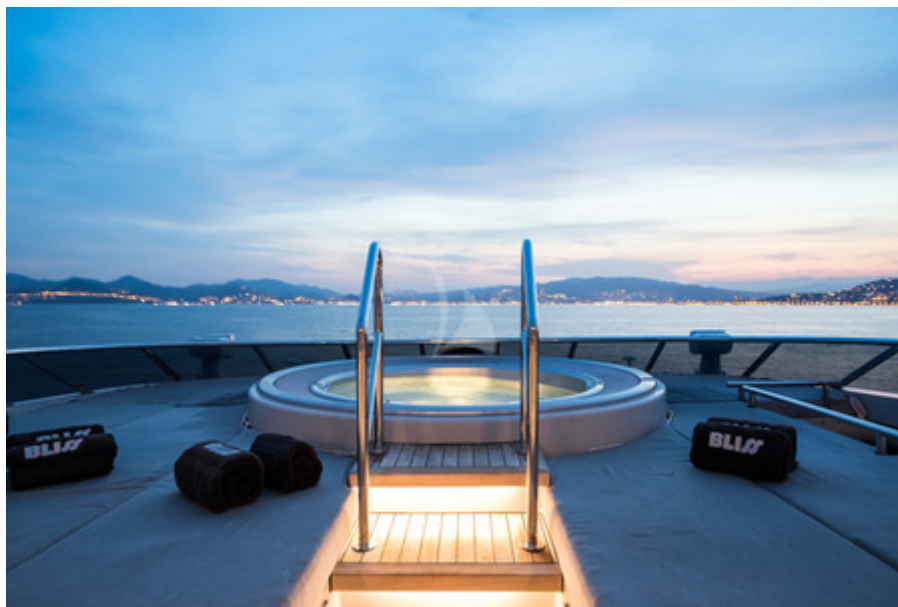
Jacuzzi



Bow



Sundeck



Jacuzzi

SPECIFICATIONS

ACCOMMODATION

Number of Guests: 12

Number of Cabins: 6

Cabin Configuration: 4 Double, 1 Twin, 1 Convertible

Bed Configuration: 1 Pullman, 4 King, 1 Queen, 2 Single

EQUIPMENT

Engines: Engines: 2x MTU 16V4000 M90 (2 x 2,720kw)

Generators: 2 x Kilopak (2 x 99kw)

Stabilizers (underway & at anchor) VT NAIAD

Alternative fuel consumptions:

550 l.p.h. (Litres Per Hour) @ 12.5 knots

1500 l.p.h. (Litres Per Hour) @ 24 knots

Cruising Speed: 16 knots

Fuel Consumption: 680 Litres/Hr

WATERSPORTS

Tenders + Toys: 5.5m Dariel 110HP jet 35knots

Williams Turbojet 325 (rescue boat)

1 x 3-seated Yamaha VX cruiser - 2017 1800cc

1 x 2-seated Seadoo Spark Trixx -2017 900cc

2 Stand Up Paddleboards

1 x Seabob F5S

Towables (Biscuits & Donuts)

Skis and a wakeboard

Snorkeling Equipment

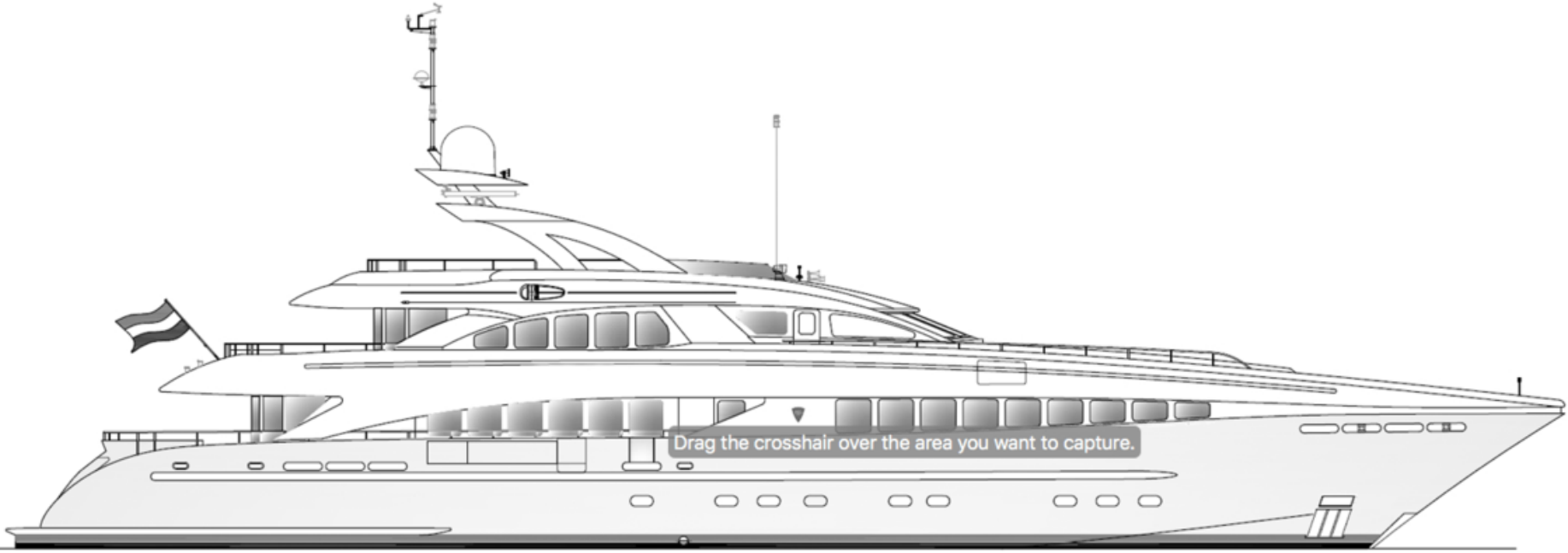
Diving Equipment (UPON AGREEMENT)

Fishing Rods

Sauna (2-person)

Full set of gym equipment: Dumbbells, TrX, balls, elastic bands, bosun, mats etc.

LAYOUT



2x4, 1700

Disclaimer

This document is not contractual. All specifications are given in good faith and offered for informational purposes only. The publisher and company do not warrant or assume any legal liability or responsibility for the accuracy, completeness, or usefulness of any information and/or images displayed. Yacht inventory, specifications and charter prices are subject to change without prior notice. None of the text and/or images used in this brochure may be reproduced without written consent from the publisher.